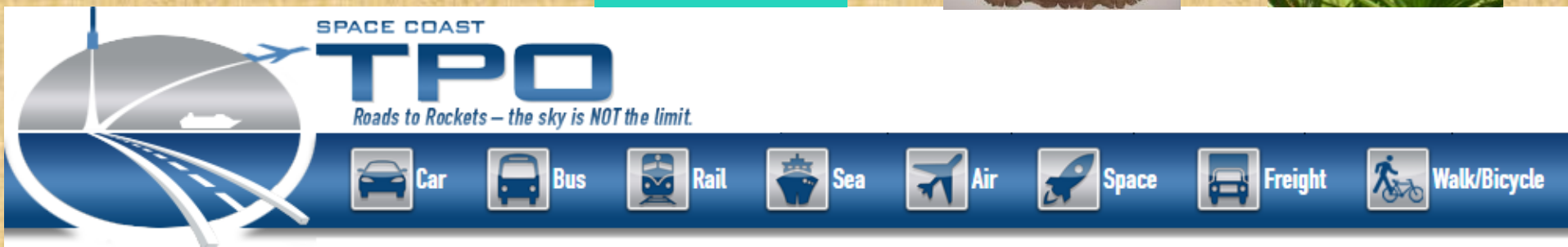
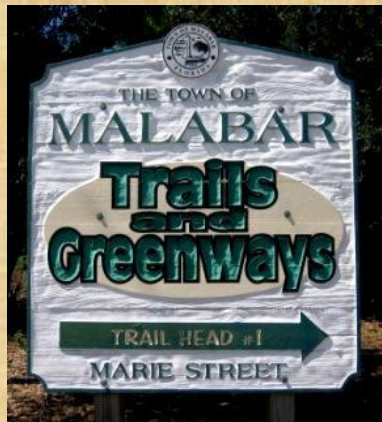


# G-V T&GB & TOM T&GC & TPO & EEL Pgm Joint Workshop on South Brevard Trails Thursday January 12, 2017 6:00 PM – 8:00 PM

Grant-Valkaria (G-V) Town Hall - 1449 Valkaria Rd, Grant-Valkaria, Florida

## TOWN OF MALABAR (TOM) TRAILS & GREENWAYS “T&GC” Who We Are & Where We Have Been

presented by Drew Thompson, TOM T&GC Chair



# TOM T&GC - **Who We Are** & Where We Have Been

## **MEMBERSHIP – STRUCTURE – MEETINGS – WORK EVENTS**

### **MEMBERSHIP**

**Drew Thompson – Chair & TOM Rep / TPO BPTAC**

**Murray Hann – Vice Chair**

**Dorothy Carmel – TOM Recording Secretary**

**Collette Buffaloe – Committee Member**

**Annelie Harvey - Committee Member**

**Bob Wilbur – Committee Member**



### **STRUCTURE**

**T&GC submits fiscal impacting ideas via Parks & Recreation Board**

### **MEETINGS**

**Monthly – 2<sup>nd</sup> Monday 6:00 PM, TOM Town Hall**

### **WORK EVENTS**

**Scheduled at monthly meeting (usually 1 each month)**

# TOM T&GC - **Who We Are** & Where We Have Been

## **Organizational Connections**

**Town of Malabar (TOM) Citizens – Formal Connection**  
**Town Council**



**Parks & Recreation Board (\$ approval)**

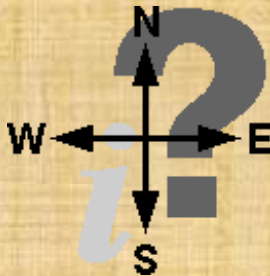
**Trails and Greenways Committee (“T&GC”)**

**Affiliated Organizations – Cooperative Connections**



# TOM T&GC - Who We Are & Where We Have Been

## Focus: Recognize Diversity of Users – Establish Rules & Signage



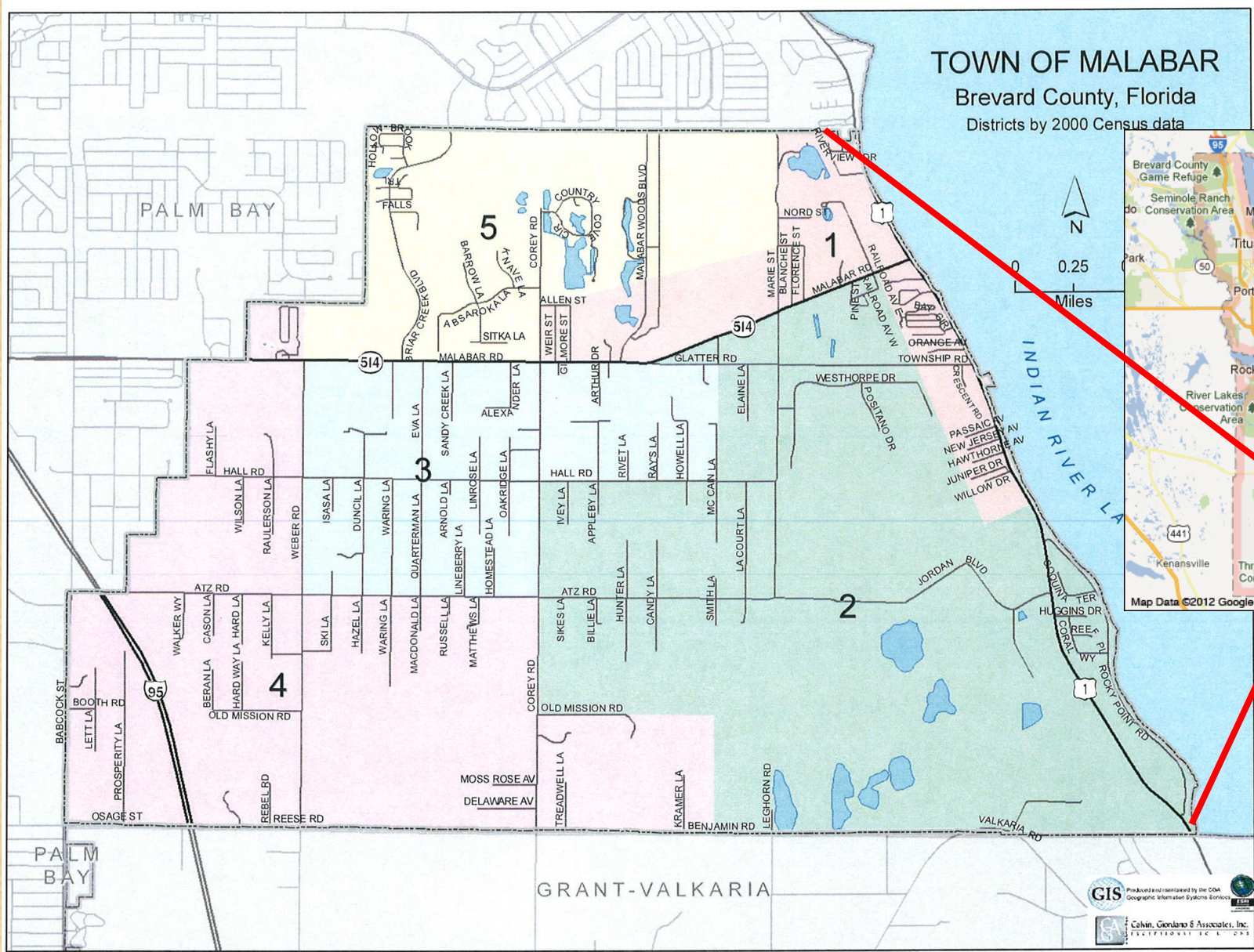
## Focus: Promote the Benefits of Trails and Linear Parks

- Improved quality of life
- Increased community pride
- Increased property values
- Recreation through walking, hiking, cycling, riding, etc.
- Reduced traffic — alternative transportation offsets pollution
- Reduced crime in the area
- Eco-tourism possibilities
- Conservation of linked native ecosystems and landscapes



# TOM T&GC - Who We Are & Where We Have Been

## Location – Town of Malabar within Brevard County



# TOM T&GC - Who We Are & Where We Have Been

## Location – Town of Malabar within Brevard County

AI Tuttle Trail  
(FDOT OGT, Complete)

Malabar Sand Hill Trailhead  
1400 Marie Street  
Malabar, FL



Malabar Road SR 514

Brevard County Greenway & ROW (natural surface)

Jordan Scrub Sanctuary  
has many local, natural  
loop trails - one shown  
below

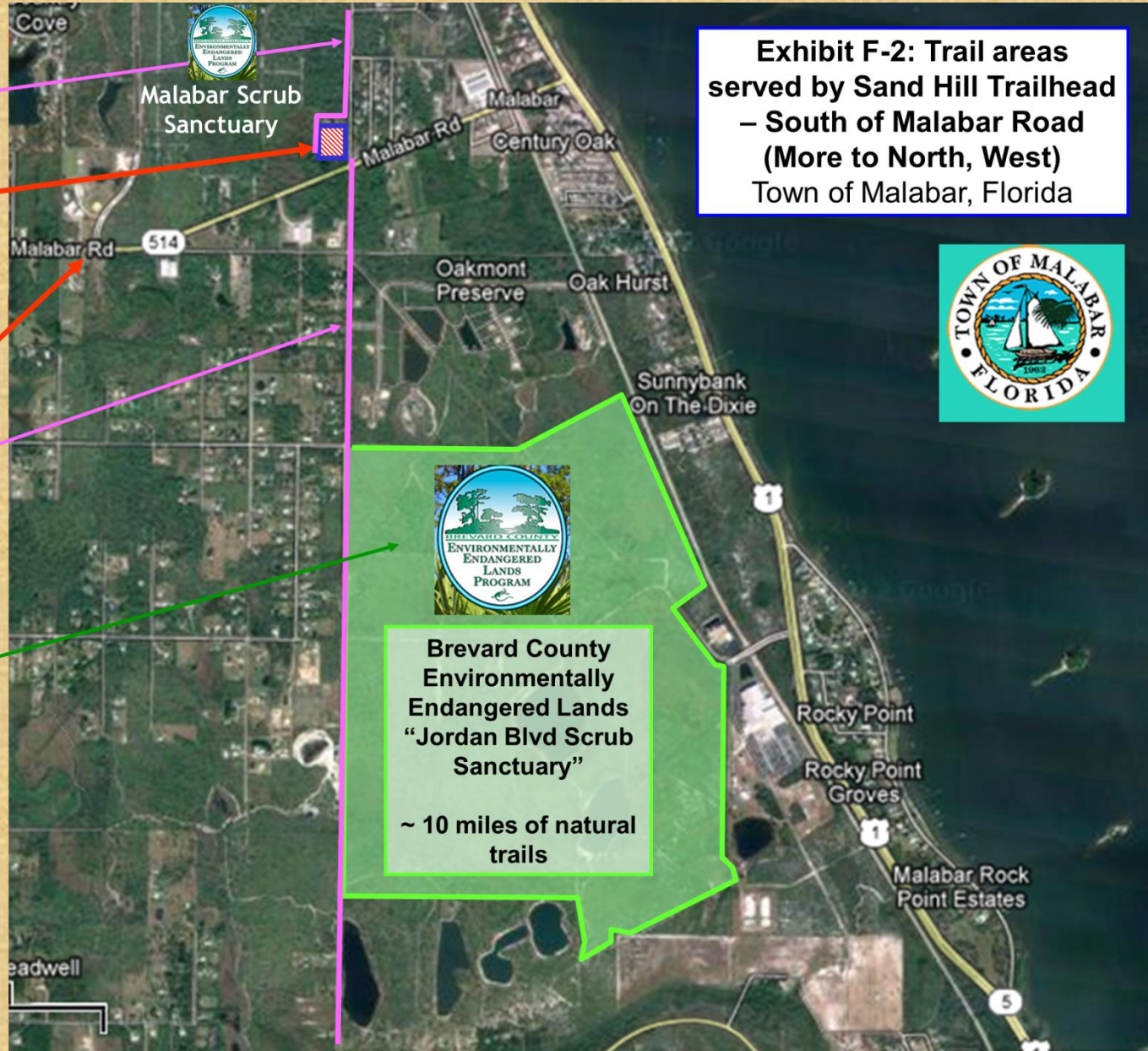
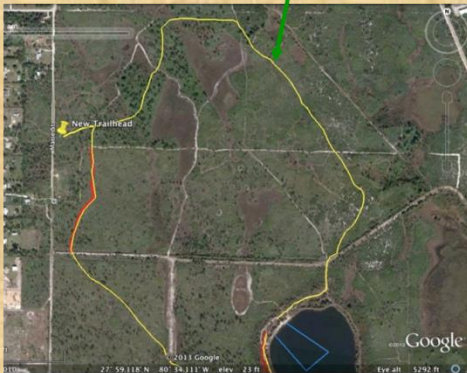


Exhibit F-2: Trail areas served by Sand Hill Trailhead – South of Malabar Road (More to North, West) Town of Malabar, Florida

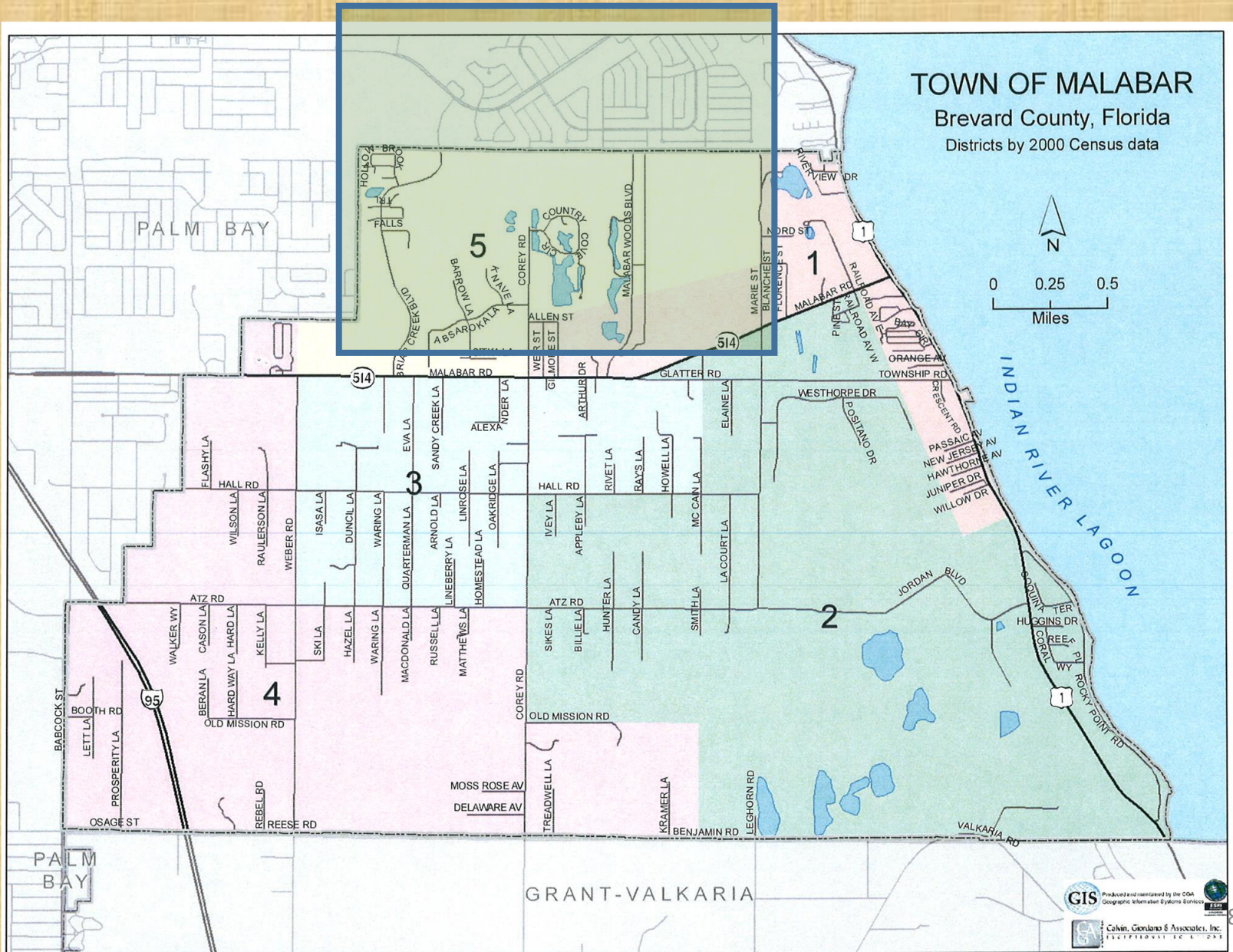


Brevard County Environmentally Endangered Lands "Jordan Blvd Scrub Sanctuary"  
~ 10 miles of natural trails



# TOM T&GC - Who We Are & Where We Have Been

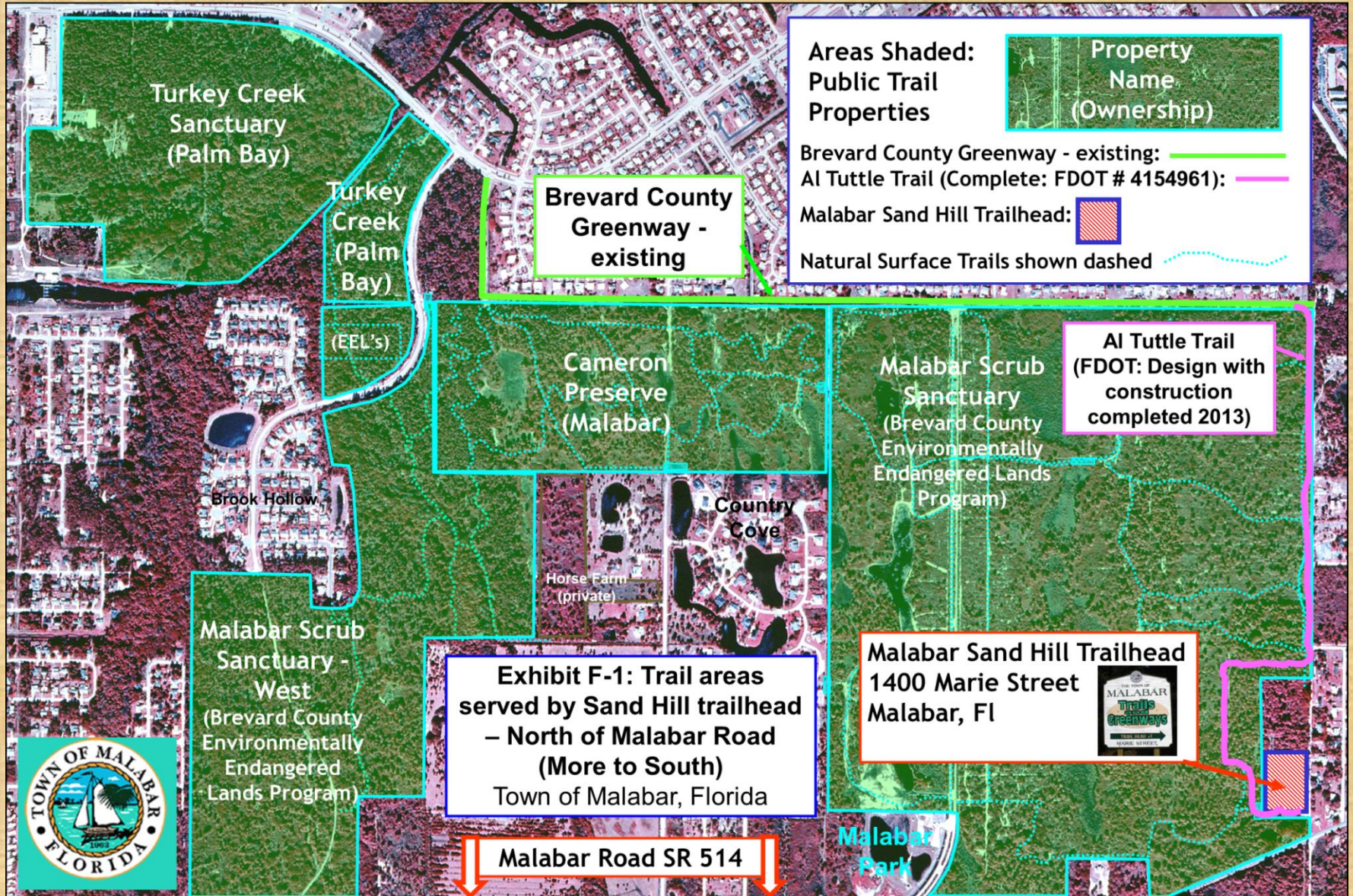
## Most T&GC Focus – Significance of “Northern Malabar” Trails

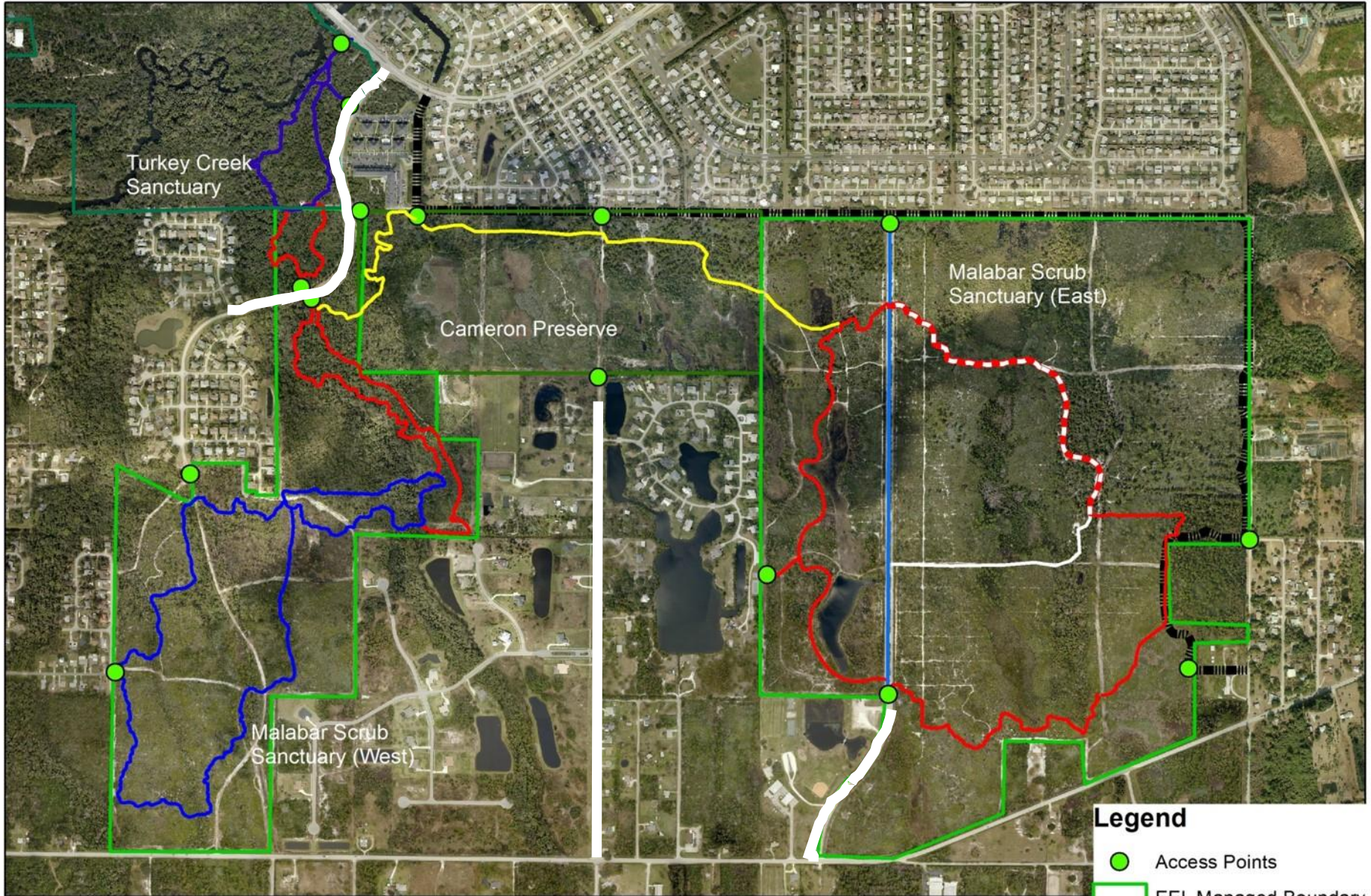




# TOM T&GC - Who We Are & Where We Have Been

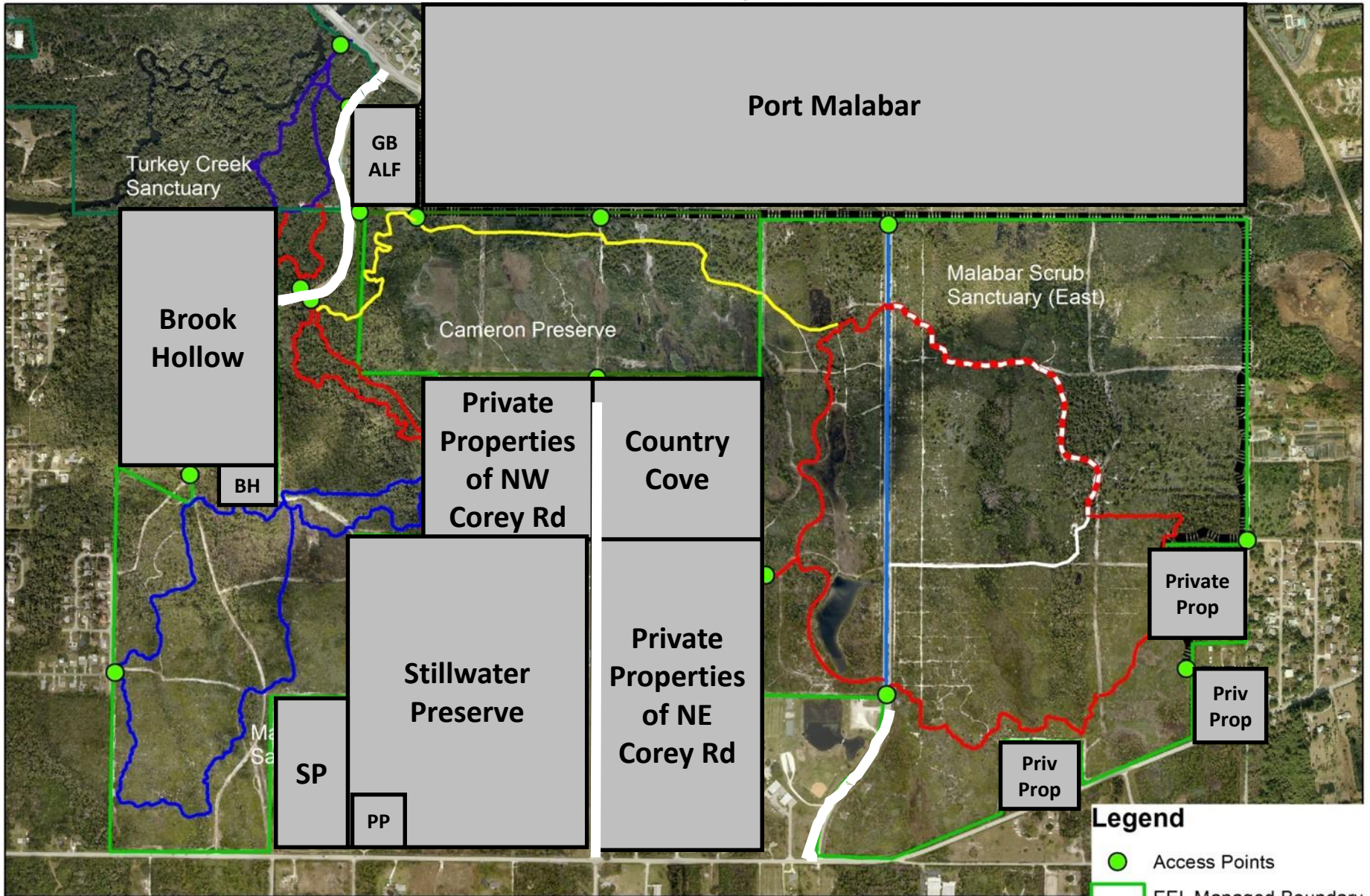
## Trail Connectivity – External Trail Systems





- Legend**
- Access Points
  - EEL Managed Boundary
  - Cameron Preserve
  - ▬ Paved Trail

**Only marked trails are shown on the map.**

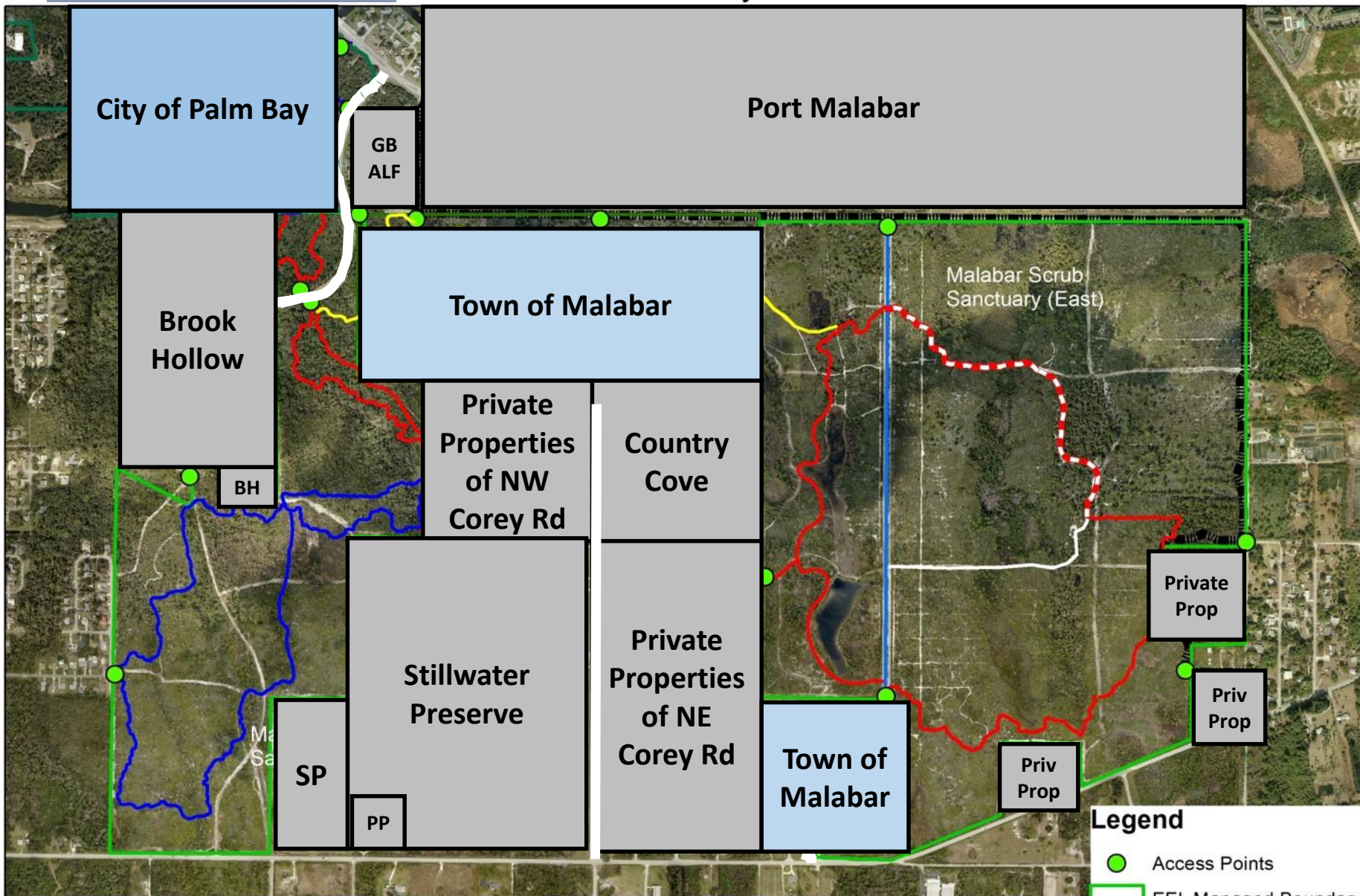


**Only marked trails are shown on the map.**

# + City/Town

## Malabar Trail System

## North of Malabar Road



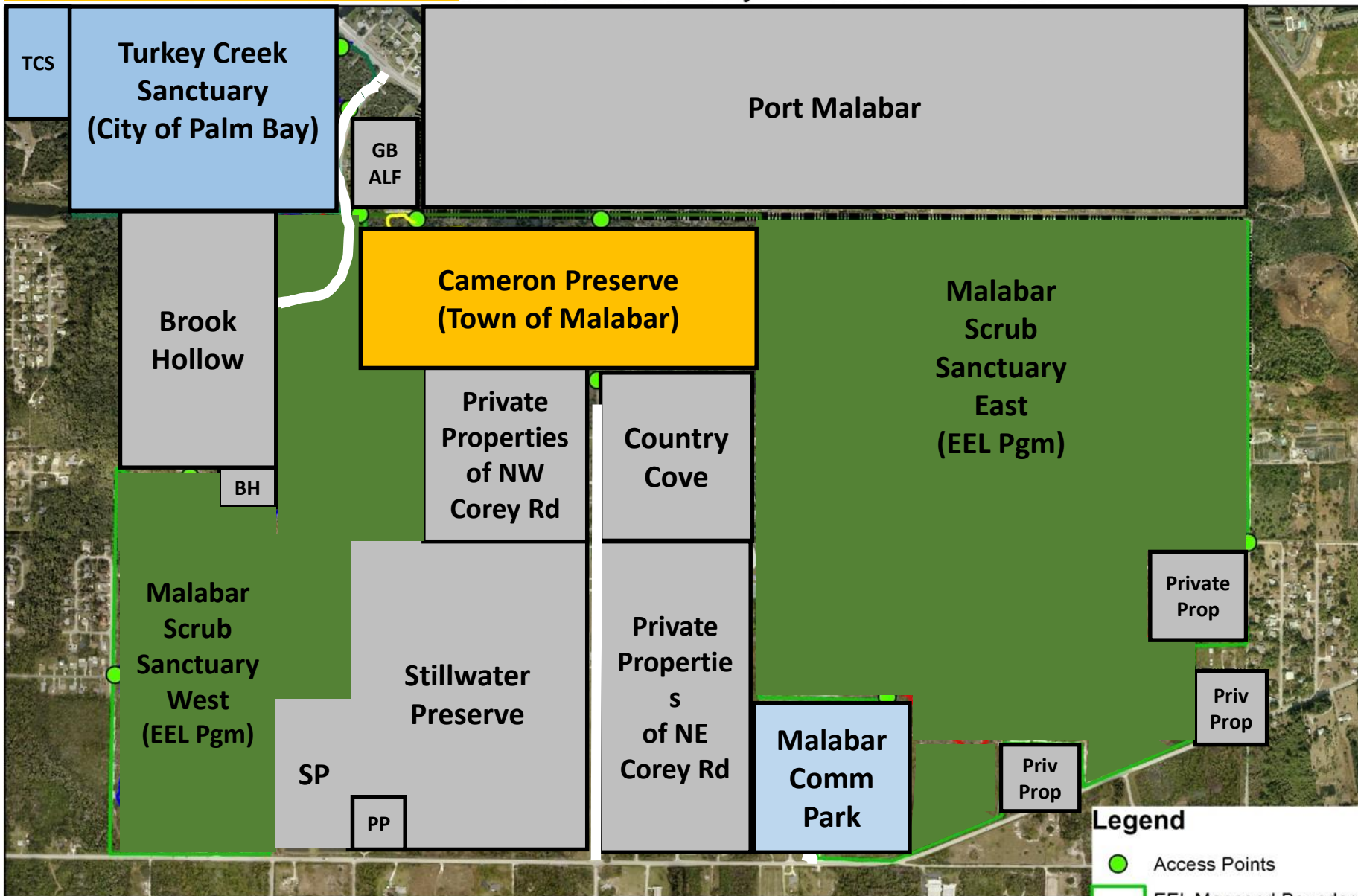
- Legend**
- Access Points
  - ▭ EEL Managed Boundary
  - ▭ Cameron Preserve
  - ▬ Paved Trail

**Only marked trails are shown on the map.**

# "Cameron Bridge"

Malabar Trail System

North of Malabar Road



0 800 1,600 3,200 Feet

Only marked trails are shown on the map.

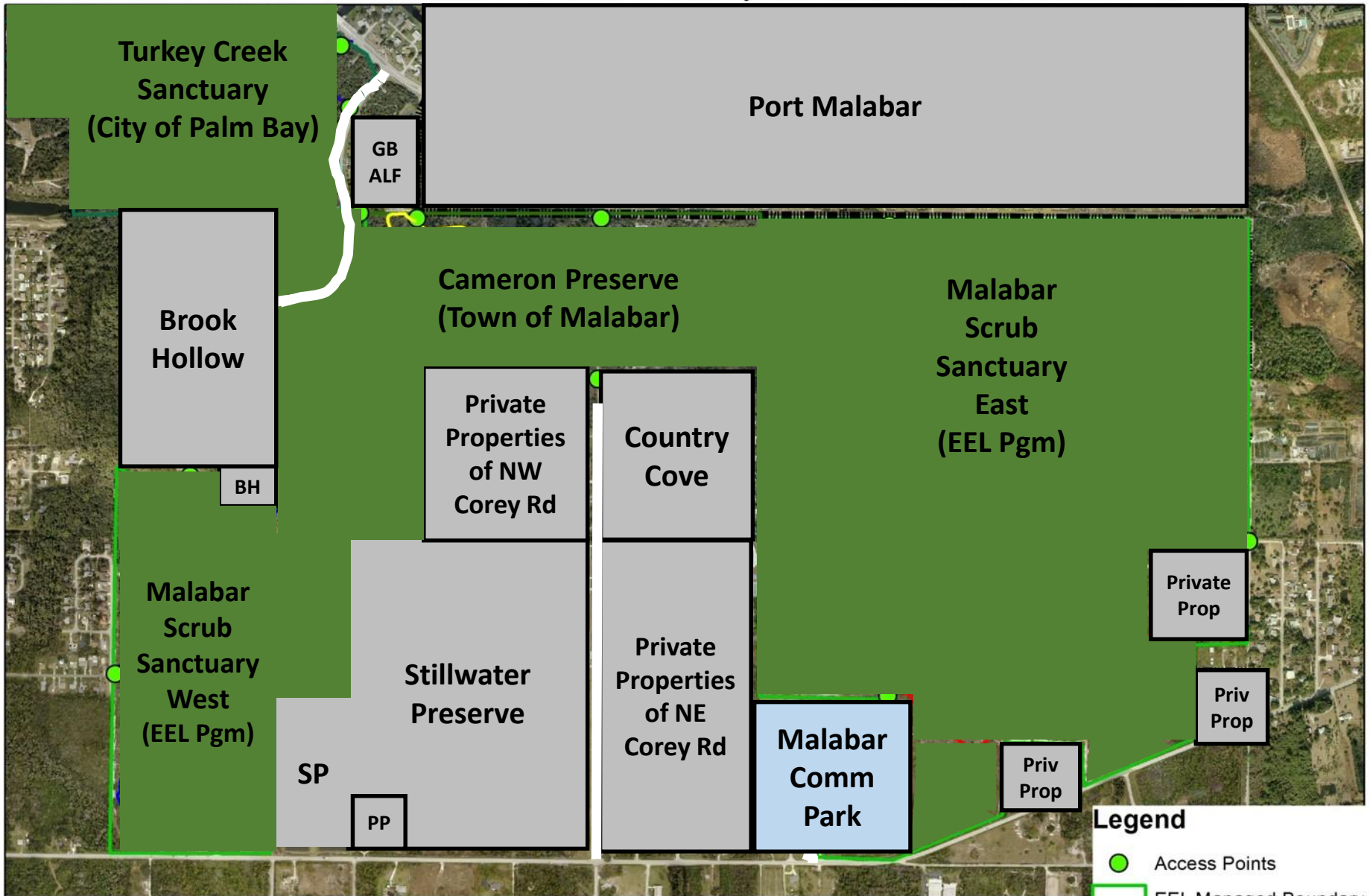
### Legend

- Access Points
- EEL Managed Boundary
- Cameron Preserve
- Paved Trail

# Greenway

## Malabar Trail System

## North of Malabar Road



### Legend

- Access Points
- EEL Managed Boundary
- Cameron Preserve
- Paved Trail



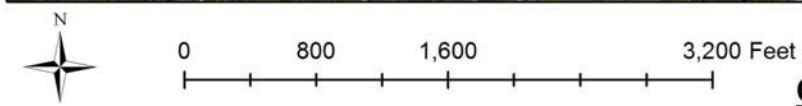
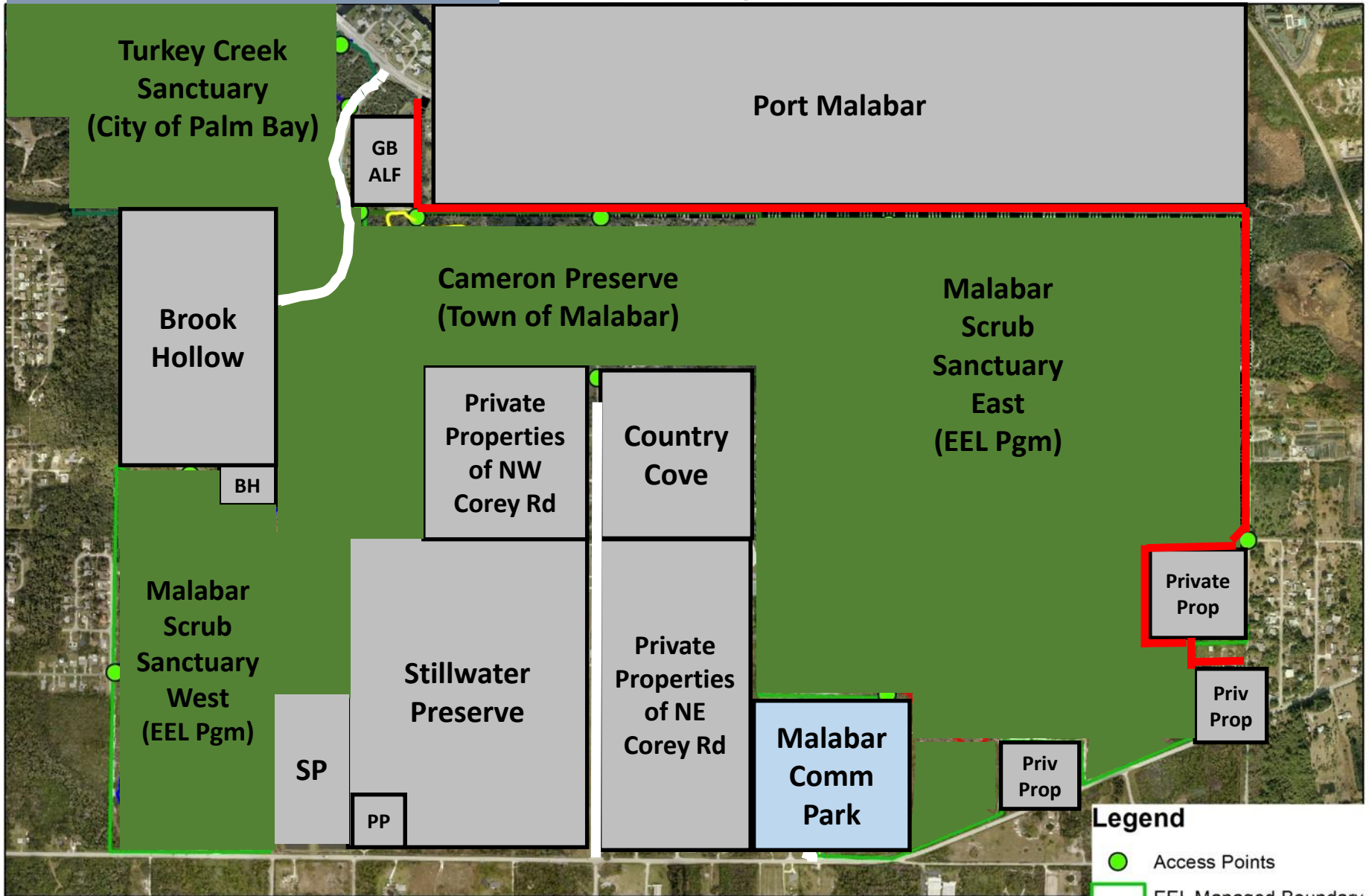
0 800 1,600 3,200 Feet

**Only marked trails are shown on the map.**

# Al Tuttle (paved)

## Malabar Trail System

North of Malabar Road



- Legend**
- Access Points
  - ▭ EEL Managed Boundary
  - ▭ Cameron Preserve
  - ▭ Paved Trail

**Only marked trails are shown on the map.**

# TOM T&GC - Who We Are & Where We Have Been

## Trails for All Ages





# TOM T&GC - Who We Are & Where We Have Been

## # 10 - Al Tuttle Trail - NW Trailhead



Port Malabar Blvd., Palm Bay  
North of Glenbrooke at Palm Bay

**TOM T&GC - Who We Are & Where We Have Been**  
**Trails for All Ages**

**# 3 & 5 (midway) - Al Tuttle Trail – Glenbrooke**



**TOM T&GC - Who We Are & Where We Have Been**  
**Al Tuttle Trail – Looking South (after Bridge)**



**TOM T&GC - Who We Are & Where We Have Been**  
**At Tuttle Trail – Bridge Parallel to Marie St – Looking South**



**TOM T&GC - Who We Are & Where We Have Been**  
**Al Tuttle Trail – Bridge Parallel to Marie St – Looking South**



**TOM T&GC - Who We Are & Where We Have Been**  
**AI Tuttle Trail – Looking South (after Bridge)**



**WHEN**  
**has the T&GC**  
**made a difference?**

# TOM T&GC - Who We Are & Where We Have Been Malabar' Sand Hill Trailhead at Mile "Marker 0"





**TOM T&GC - Who We Are & Where We Have Been**  
**Sand Hill Trailhead – Horse paddock entrance**  
**Trailhead Built by Malabar trail volunteers**



TOM T&GC - Who We Are & Where We Have Been

# Cameron & Volunteers Preserve Trailhead North End of Corey Rd. (Looking North)



TOM T&GC - Who We Are & Where We Have Been

# **Cameron & Volunteers Preserve Trailhead North End of Corey Rd. (Looking South)**




TOM T&GC - Who We Are & Where We Have Been  
**Start-up Ideas for Grant-Valkaria**



**Town Council Meeting**  
**Trails and Greenways Committee Structure and Objectives**  
Wednesday, August 14, 2013  
7:00 PM  
TOWN OF GRANT-VALKARIA  
4240 US Highway 1  
GRANT-VALKARIA, FLORIDA

**Courtesy Presentation by Town of Malabar Trails & Greenways Committee**

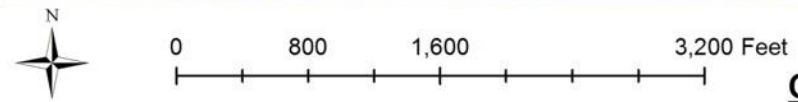
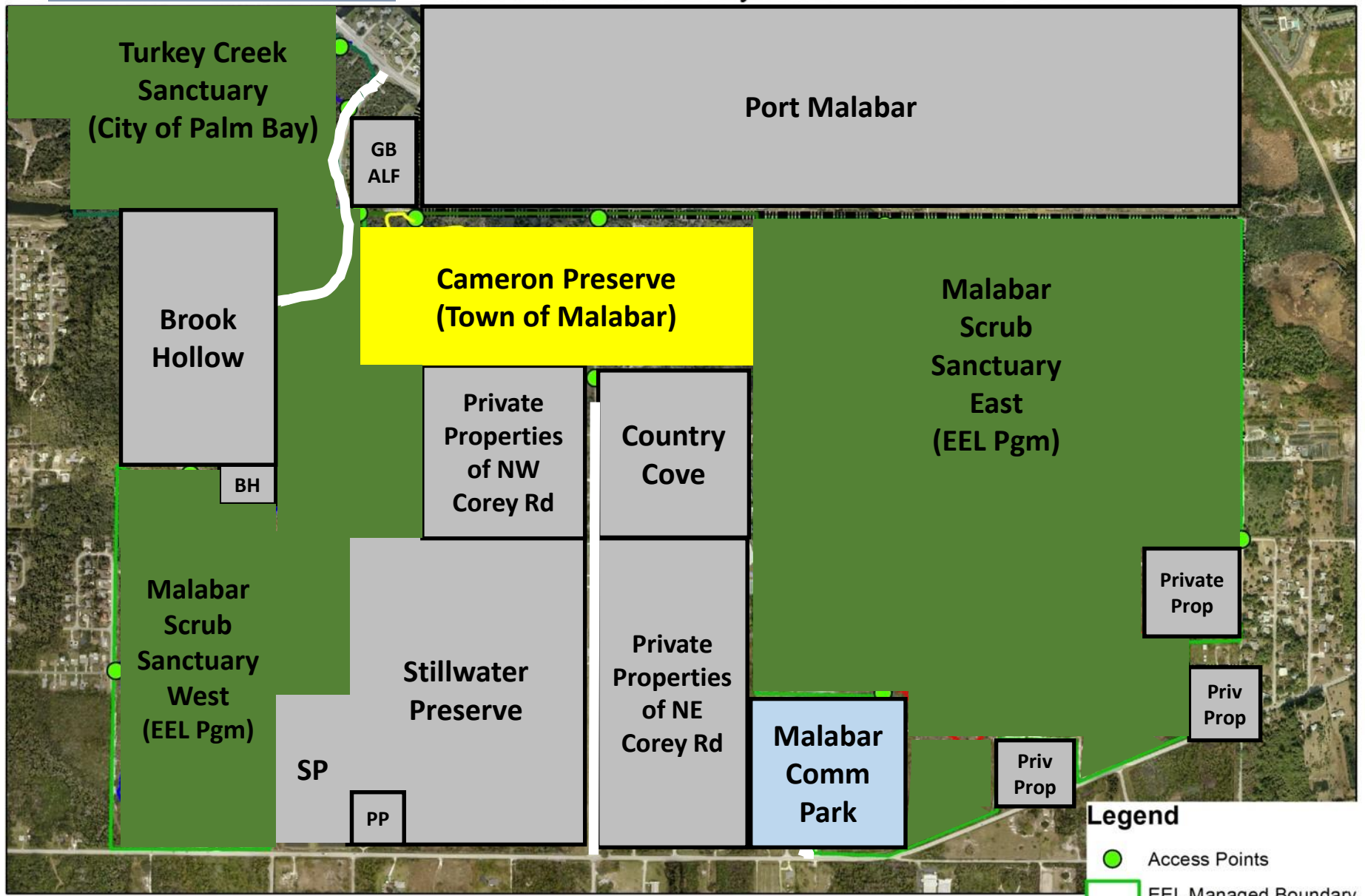
Malabar T&G Committee Presenters:  
Murray Hann, Chair, BPTAC  
Drew Thompson, Chair, T&G  
Bob Wilbur, South Brevard  
Outdoors Expert



**90 Page  
Custom  
PowerPoint  
Presentation**

# Cameron

## Malabar Trail System



**Legend**

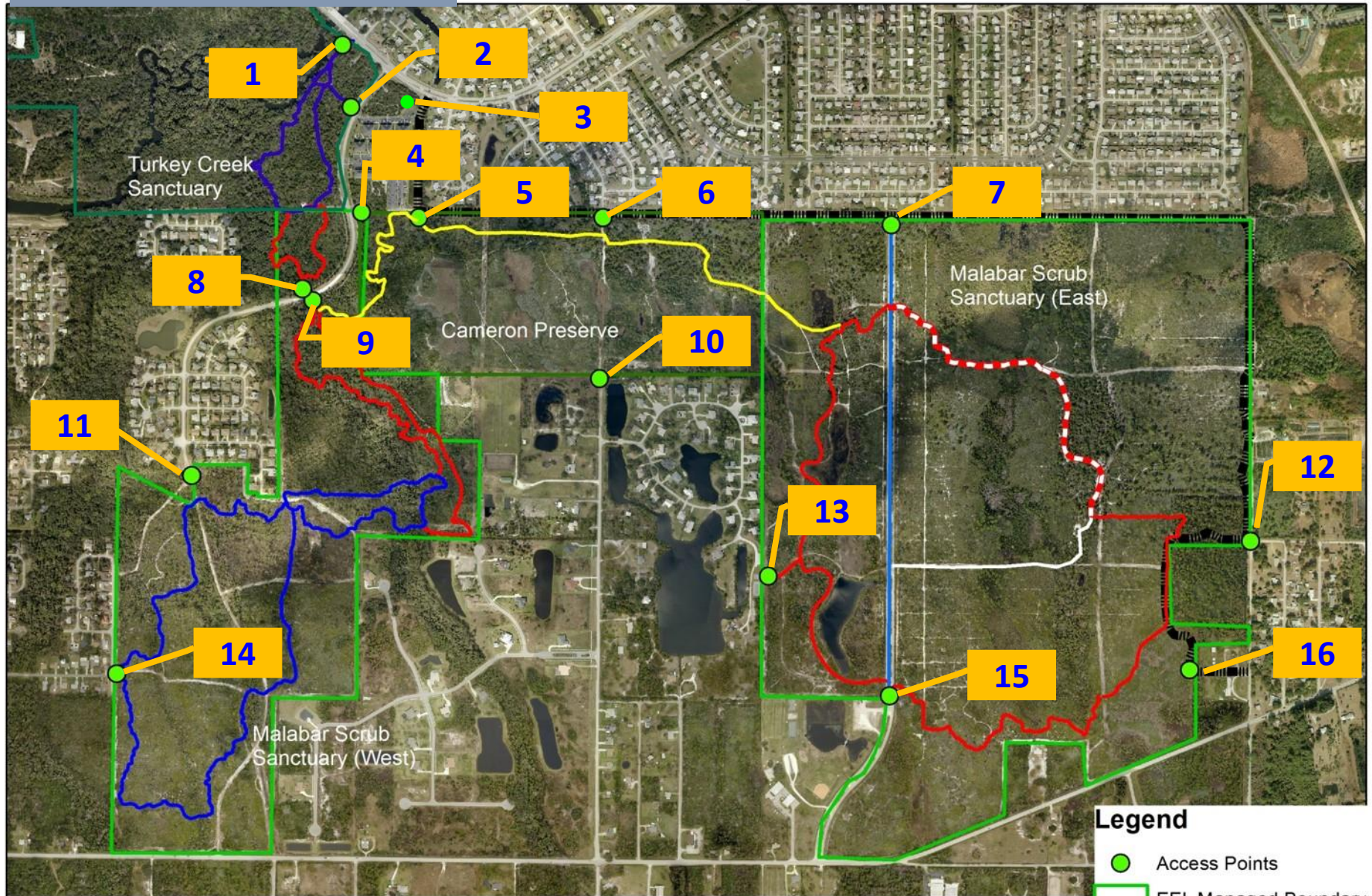
- Access Points
- EEL Managed Boundary
- Cameron Preserve
- Paved Trail

Only marked trails are shown on the map.

# Access Points

## Malabar Trail System

## North of Malabar Road



### Legend

- Access Points
- EEL Managed Boundary
- Cameron Preserve
- ▬ Paved Trail

**Only marked trails are shown on the map.**

# TOM T&GC - Who We Are & Where We Have Been

## # 10 - Cameron Preserve Trail Head at North End of Corey Rd.



Officially located at 1100 Corey Road, Malabar, FL 32950, it is super easy to find the Cameron Preserve. Just head to south Brevard County and find Malabar Road. If you are traveling from I-95, take to exit 173. From Malabar Road at I-95, head east for 2.7 miles and then turn left on Corey Road. If traveling south from Palm Bay or North from Barefoot Bay, from Malabar Road at US Hwy 1, head east for 1.7 miles and then turn right on Corey Road. Go north on Corey Road for about 0.7 miles, the pavement ceases and you are at the trailhead at the North end of Corey Road, Malabar, FL. You will see a fence, a sign, and a kiosk. Your Cameron Preserve adventure is about to begin.

Access #	Description	Closest Road for Parking
1	SE of Turkey Creek Bridge	Briar Creek Blvd. - Palm Bay
2	Canoe / Kayak Launch at Turkey Creek Sanctuary	Briar Creek Blvd. - Palm Bay
3	Al Tuttle Trail - NW Trailhead	Port Malabar Blvd. - Palm Bay (minimal)
4	Blue Pipe Trailhead	Briar Creek Blvd. - Malabar
5	Cameron Preserve NW	Briar Creek Blvd. - Malabar
6	Cameron Preserve N (off Al Tuttle Trail)	Briar Creek Blvd. - Malabar
7	Malabar Scrub East - N Trailhead	Malabar Community Park (off Malabar Rd) - Malabar
8	Malabar Scrub East Trail Crossing of Briar Creek Blvd	Briar Creek Blvd. - Malabar
9	Malabar Scrub East Trail Head at Briar Creek Blvd.	Briar Creek Blvd. - Malabar
<b>10</b>	<b>Cameron Preserve Trail Head at North End of Corey Rd.</b>	<b>Corey Rd. (North End) unpaved parking</b>
11	Malabar Scrub West Trail Head at Paved end of Briar Creek Blvd. (Brook Hollow)	Briar Creek Blvd. - Malabar
12	Malabar Scrub East Trail Head at Marie Street	Large trailhead a block away (S) - plenty of parking ADA restroom anticipated Spring 2016
13	Malabar Scrub West Trail Head at Paved end of Oak Harbour Lane (Country Cove)	Oak Harbour Lane
14	Malabar Scrub West Trail Head at Englar Ave. - W	Englar Ave. - Palm Bay
15	Malabar Scrub West Trail Head at Malabar Community Park - S	Malabar Community Park (off Malabar Rd) – Malabar
16	Malabar Scrub East at Sand Hill Trailhead at 1400 Marie Street (end of paved Al Tuttle Trail)	Large trailhead - plenty of parking ADA restroom anticipated Spring 2016

# TOM T&GC - Who We Are & Where We Have Been

## Space Coast TPO Pathways Project

### Space Coast Pathways Project



#### What is the Pathways Project?

A project to develop an Interactive Guide to Brevard's trails, waterways, sidewalks, bike lanes and unique outdoor adventures funded by the Space Coast Transportation Planning Organization.

### Partner Workshop

**Date:** October 15, 2015

**Time:** 8:30 am to Noon

**Place:** Bill Posey Conference Center at Florida Department of Health  
2555 Judge Fran Jamieson Way  
Viera, FL 32940

#### Who Should Attend:

- Walk/bike/trail advocates
- Tourism organizations
- Schools/colleges
- Health agencies
- Local governments
- Media

#### Goals:

- What does the community want in an online pathways guide?
- Where are the current pathways?
- How can we promote our pathways?

We need  
your input!



RSVP to: Katrina Morrell  
Multimodal Communications Specialist  
321-690-6890  
katrina.morrell@brevardcounty.us  
<http://spacecoasttpo.com/walk-bicycle/>



# TOM T&GC - Who We Are & Where We Have Been Cameron Preserve Article in TPO Brochure of Brevard Trails – February 2016



2725 Judge Fran Jamieson Way, Bldg. B  
Viera, Florida 32940  
Telephone: (321) 690-6890  
Fax: (321) 690-6827  
www.spacecoasttpo.com

---

## Request for Pathways Proposals Posted October 15, 2015

### Space Coast TPO Pathways Project Kick Off February, 2016 Introduction

The Pathways Project is the development of an Interactive Guide to Brevard's trails, waterways, sidewalks, bike lanes and unique outdoor adventures.

This application solicits proposals to identify pathways and related events for public participation in February 2016. The goal of the Pathways Project Kick Off is to showcase the diversity of outdoor activities available to residents and visitor's in all geographic areas of the Space Coast. Selected pathways will also be included in the Interactive Guide. Proposals may include self-guided pathways, guided pathways, or pathway events. Proposed pathway projects may be free, not-for-profit, or for profit.

In summary, please identify a pathway in your community that could be highlighted during the month of February and included in the Interactive Guide later in the year. Please use the application below to complete your pathway proposal.

**DUE BY TUESDAY, DECEMBER 1, 2015, 3:00 PM**

**SUBMIT ELECTRONICALLY TO:**

# TOM T&GC - Who We Are & Where We Have Been

## Cameron Preserve Article in TPO Brochure of Brevard Trails – February 2016 - continued

Pathways Outline - Town Of Malabar T&GC Submission\_20151201.Docx Last Updated: 12/1/2015 3:34 PM

### A. Introduction:

Malabar invites visitors to enjoy our Cameron Preserve. Natural trails of the 100 acres are clearly marked for hikers, mountain bikers, and equestrians, and include sunny and shaded, deep Florida wooded trails. Kiosks are strategically located with smartphone QR codes linked to maps & information.

The full name of the Cameron Preserve is actually the **Richard E. Cameron, Sr. & Volunteers Wilderness Preserve**. Richard rounded up many locals who also loved the local wilderness areas and launched an effort of preservation, trail and trailhead improvements that now continues through Malabar's T&GC. We are always working to make the trail system of Malabar more enjoyable and sustainable. For more information about volunteering with the T&GC, please contact Cindi Kelly, Deputy Town Clerk, Town of Malabar, at: [ckelley@townofmalabar.org](mailto:ckelley@townofmalabar.org) or (321) 727-7764 x11.

### B. The Basics:

The trails of Cameron Preserve were designed for hikers, mountain bikers and equestrian users. There is a variety of topography to see, including wooded areas and open Florida scrub. Elevation changes are minor, although the trail segments do pass by some interesting wetland areas. A part of the south Brevard County greenway, contiguous areas of forest and scrub, the Cameron Preserve offers much in biodiversity of plant and animal life. The Cameron Preserve is in the shape of a rectangle, with its southern border crossing the north end of Corey Road, in Malabar. It is mostly bordered on the north along the boundary canal by the Al Tuttle Trail, a paved trail that runs from Port Malabar Blvd., in Palm Bay, to the Sand Hill Trailhead, at 1400 Marie Street, in Malabar. If Corey Road went through the Cameron Preserve, two thirds of the preserve would be to the west and one third to the east. The Cameron Preserve is maintained by Town of Malabar, connects to and lies between two EEL Program (Environmentally Endangered Lands Program) maintained properties to the east and west: the Malabar Scrub Sanctuary East & Malabar Scrub Sanctuary West. Additionally, the northwestern corner of the Cameron Preserve is separated from trails of the Turkey Creek Sanctuary only by Briar Creek Boulevard – at the point where City of Palm Bay and Town of Malabar meet. Accordingly, the Cameron Preserve provides an idea of trail conditions of these neighboring trail systems without some of the challenge factor and/or distances associated with those areas. The Trails and Greenways Committee of Town of Malabar works closely with the EEL Program Managers so that the connections of trails through these different protected lands are well marked and flow nicely.

Pathways Outline - Town Of Malabar T&GC Submission\_20151201.Docx Last Updated: 12/1/2015 3:34 PM

### C. Added Bonus:

To optimize safety, signage of the (main) yellow trail was recently adjusted to recognize the new single track approach. Yellow trail markers are now designated with arrows that indicate the recommended direction of travel for hikers and mountain bikers. The northern east-west segments of the trail have arrows and the letter "W" to have hikers and mountain bikers travel west. The southern east-west segments of the trail have arrows and the letter "E" to have hikers and mountain bikers travel east. Equestrian users are asked to travel in the opposite direction so that any trail encounters between horses and people are face to face. We have found that horses are much less likely to be startled when they sense that a person is approaching from in front of them. Surprising a horse from behind could be dangerous for all.

An additional bonus of the trails in the Cameron Preserve is especially nice for new mountain bikers. Rather than abandon old "sugar sand" trail sections originally cut by ATVs, where only the toughest mountain bikers could push on through, Malabar's Trails and Greenways Committee (T&GC) has implemented **recycled jute-based trail stabilizer (RJTS)**. This local trail-proven trick involved staking down inverted carpet to stabilize such sections. Without these stabilization efforts, the deep sand would continue to cause trail users to oscillate back and forth, motivating them to seek more solid riding/walking locations and thus distorting the trail width. Native grass seed has been added along the stabilization areas to expedite revegetation and the sections are quickly experiencing new plant life along the trail. Stabilizing the sugar sand areas with **RJTS** has proven to be a way to recycle and it also has provided an economical way to the restore missing trail segments that now complete the single track Yellow Trail.

One more bonus is that, following your trek through the Cameron Preserve, you can replenish all those calories that you just burned by stopping by Malabar Mo's, Malabar's local bar and grill, located just west of US Hwy 1 at the east end of Malabar Road. Whether done by foot, pedal, or stirrup, if you mention to your server that you just "Cruised the Cameron" your party is sure to get just the right appetizer to help fix that calorie deficit.

### D. Challenge Factor:

Easy to moderate. While the elevation varies little, various trail surfaces are encountered. Conditions vary from dry to wet, from shaded to open, from smooth sand to numerous roots crossing the trail. Kiosks at key points along the trail will help you to identify where you are, what you will see, and conditions to expect. The area is part of a large coastal greenway system and therefore home to wildlife you may not be accustomed to seeing. Be aware that diamond back rattlesnakes call the area home, are occasionally encountered, and therefore have the right of way on

# TOM T&GC - Who We Are & Where We Have Been

## Cameron Preserve Article in TPO Brochure of Brevard Trails – February 2016 - continued

Pathways Outline - Town Of Malabar T&GC Submission\_20151201.DOCX Last Updated: 12/1/2015 3:34 PM

the trails. Signage is strong with some shortcuts to other trails and neighboring preserve areas clearly marked. Cameron is a great place to start exploring local trails and a great place to return to if your trail time is limited and you just want to feel far from a city.

### E. Getting There

Officially located at 1100 Corey Road, Malabar, FL 32950, it is super easy to find the Cameron Preserve. Just head to south Brevard County and find Malabar Road. If you are traveling from I-95, take to exit 173. From Malabar Road at I-95, head east for 2.7 miles and then turn left on Corey Road. If traveling south from Palm Bay or North from Barefoot Bay, from Malabar Road at US Hwy 1, head east for 1.7 miles and then turn right on Corey Road. Go north on Corey Road for about 0.7 miles, the pavement ceases and you are at the trailhead at the North end of Corey Road, Malabar, FL. You will see a fence, a sign, and a kiosk. Your Cameron Preserve adventure is about to begin.

### F. Know Before You Go

Users are encouraged to orient themselves to the large map at the kiosk located at the trailhead. Since cell tower strength is very weak at some locations along the trail it is recommended that, prior to venturing deep into the preserve, smartphone users download local segment maps via kiosk QR codes. The trail offers no restrooms, potable water, or horse paddocks. The nearest public restroom (without potable water & without horse paddocks) is at Malabar Community Park, located to the east of Corey Road, at 1840 Malabar Rd., Malabar, FL 32950. The nearest public restroom (with potable water and with horse paddocks) is at the Sand Hill Trailhead, located to the east of Corey Road, at 1400 Marie Street, Malabar, FL 32950 (go about 1 mile east on Malabar Rd. then turn left onto Marie Street, trailhead is less than a block off Malabar Rd.).

### G. Added Details

As with all trail exploration, it is recommended that you let someone NOT venturing with you know of your planned route, time of departure, and anticipated time of return. Check the latest local weather forecast before you head out. Even in the winter, dress appropriately for weather extremes and bring along plenty of water. Apply sunscreen before you head out and bring along some bug spray, too. Plan your adventure route so that you return prior to nightfall. Bringing a camera and binoculars are rarely a regret.

Pathways Outline - Town Of Malabar T&GC Submission\_20151201.DOCX Last Updated: 12/1/2015 3:34 PM

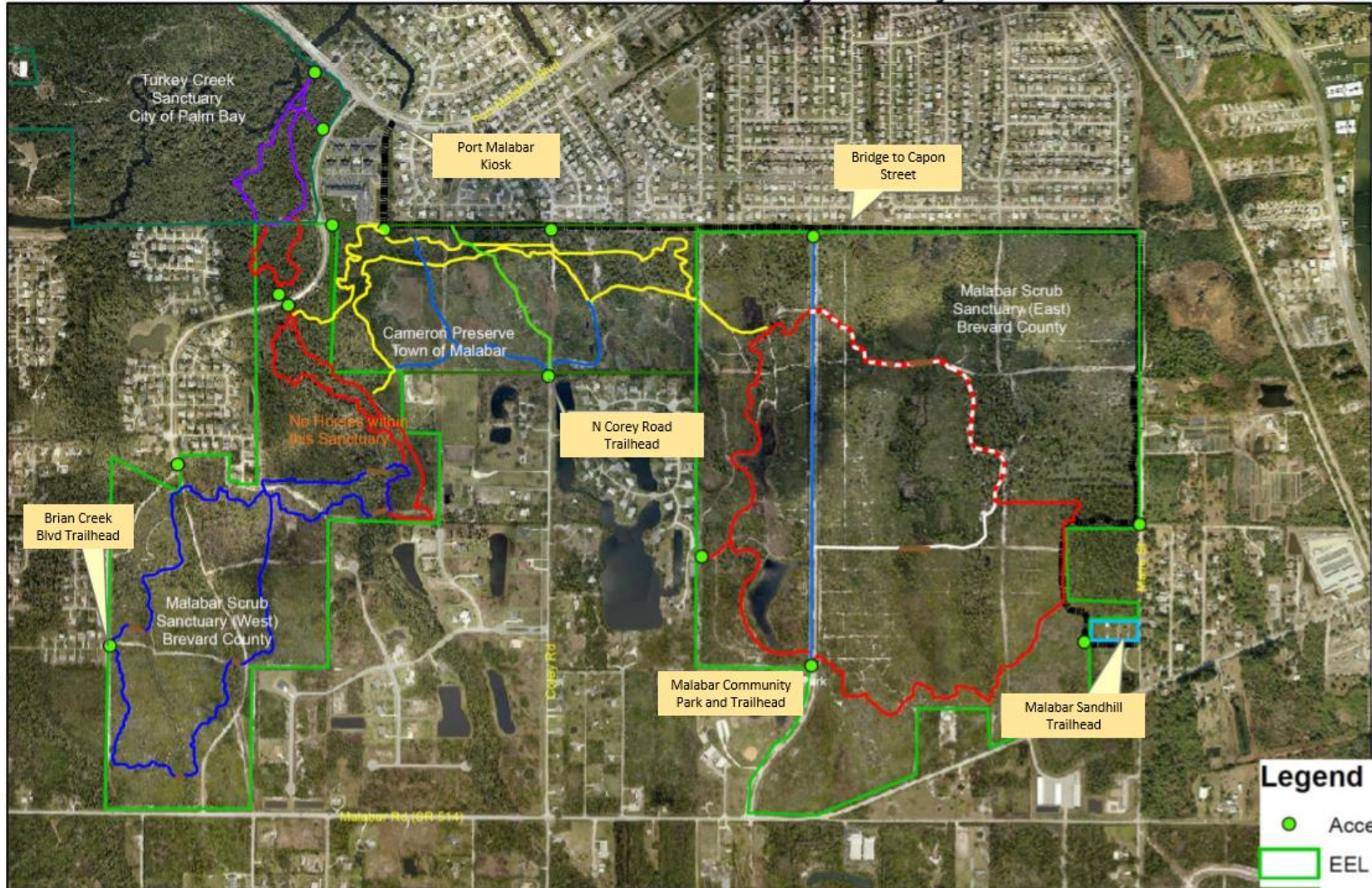
**4.2 PHOTOGRAPH(S):** Please provide at least one color photograph in JPEG format that can be published and used for event publicity.



A Cameron Preserve trail after RUTS material installation by T&GC

# 2016 Trail Map - Turkey Creek & Northern Malabar

## Malabar and Palm Bay Trail System



[RIDEBMBA.ORG](http://RIDEBMBA.ORG)

### Legend

- Access Points
- EEL Managed Boundary
- Cameron Preserve
- Paved Trail

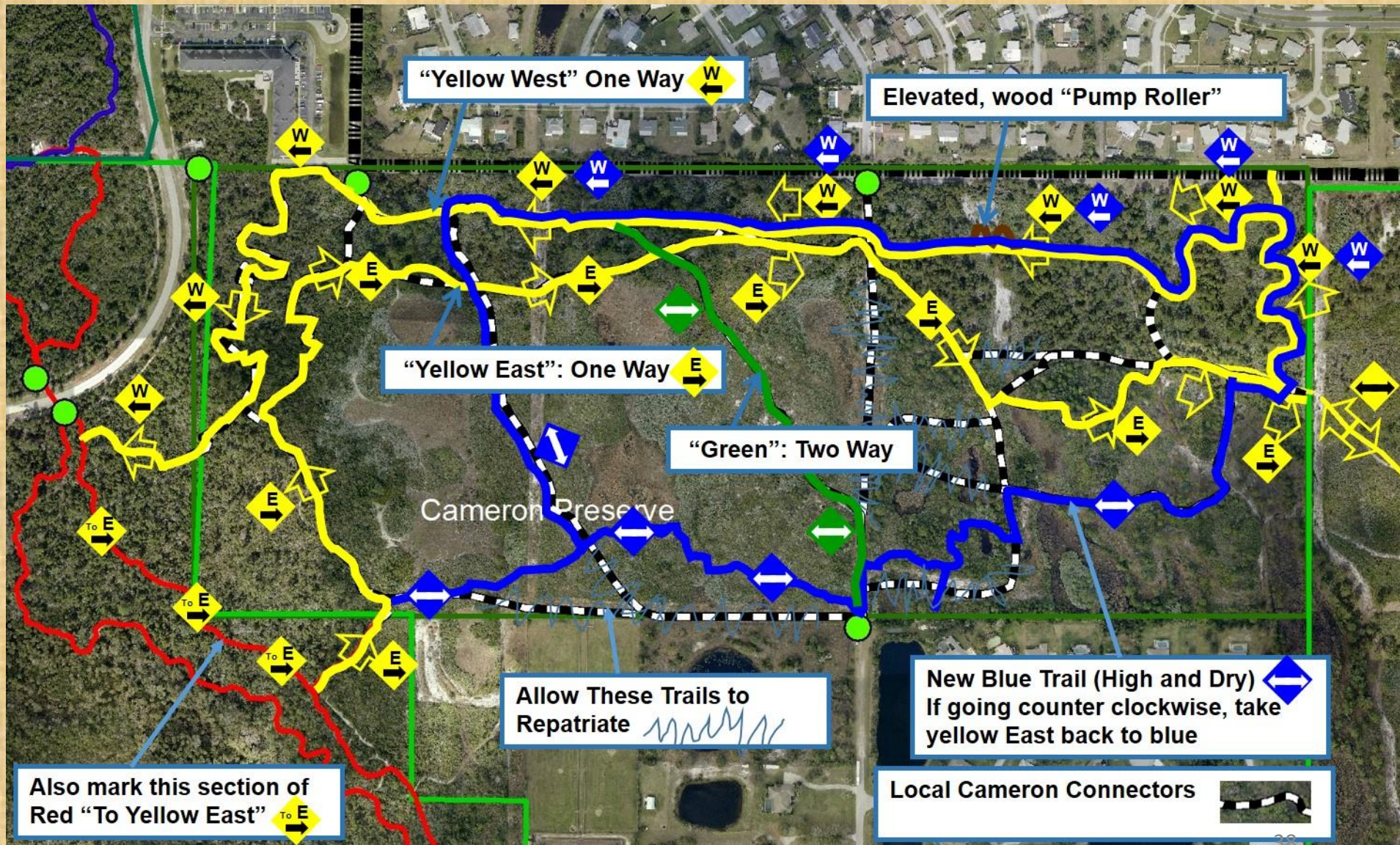


Area map provided by the Brevard County EEL Program

## New Directional Signage



# Directional Trail Marking – Cameron Preserve



**TOM T&GC - Who We Are & Where We Have Been**  
**Doing things a little different...**

- ❖ **RJTS**
- ❖ **Directional Trails**
- ❖ **QR codes on Trail Markers – for smartphone website linkage**
- ❖ **Adobe Map / Trail Marker – Annual updates of laminated local maps 11” x 14” with electronic versions of same on website**
- ❖ **Mid-week after work – work events**
- ❖ **Planning Trails for all age users**
- ❖ **Thinking big – T&GC Vision**

TOM T&GC - Who We Are & Where We Have Been

***RJTS? recycled jute-based trail stabilizer***





**TOM T&GC - Who We Are & Where We Have Been**

## **New Maps with QR Codes on Kiosks**



**TOM T&GC - Who We Are & Where We Have Been**  
**Website**

**<http://www.malabartrails.org>**



Next Trail Work Event – Is being planned by the T&GC. The date, time, and other details will be announced here. Meanwhile, please enjoy our site!

## **Remembering to Address Priorities**

- ❖ **New horse trough**
- ❖ **Restrooms**
- ❖ **Potable water**
- ❖ **Safety – trail condition monitoring**
- ❖ **Lost?... local phone number**
- ❖ **Firebreak rejuvenation – protecting resources**

TOM T&GC - Who We Are & Where We Have Been  
**Sand Hill Trailhead – Happy Horses**



This is the best equestrian Trail Head in  
Brevard County – and access miles of  
natural and paved trails

# TOM T&GC - Who We Are & Where We Have Been

## FL DEP OGT Grant Award 2014

### ADA Restroom & Parking at Sand Hill Trailhead

#### Main goals of Grant are shown in this picture

- Add ADA accessible restroom directly adjacent to Al Tuttle Trail (FDOT # 4154961)
- Add potable water supply for trail users (small RO type water treatment system, water fountain, public use certified)
- Septic system for restroom
- Pavement to connect restroom to Trail (ADA compliant)



**TOM T&GC - Who We Are & Where We Have Been**

**ADA Restroom at Sand Hill Trailhead  
Delivered March 28, 2016**



**TOM T&GC - Who We Are & Where We Have Been**  
**ADA Restroom at Sand Hill Trailhead**  
**Sidewalks, grading, utility shed**



**TOM T&GC - Who We Are & Where We Have Been**  
**ADA Restroom at Sand Hill Trailhead**  
**ADA Paved Parking**





**Will**  
**the T&GC**  
**be doing anything in**  
**the future?**

## TOM T&GC - Who We Are & Where We Have Been **Looking to the Future**

- ❖ Bringing the T&GC vision to fruition
- ❖ Implementing animal name access points
- ❖ Re-prioritizing T&GC Idea List
- ❖ Plans for storm shelter with lightning protection
- ❖ Plans for lagoon trailhead(s)
- ❖ **Plans for new trailheads - south Malabar**

## TOM T&GC - Who We Are & Where We Have Been

# T&GC “Vision”

The Vision of the T&GC\_DRAFT\_20160711.docx – Last Updated: 7/10/2016 5:10 PM

The best trail systems are all about connectivity. They facilitate connection of a diversity of users to the biodiversity of the local outdoor environment. Most of all, they connect people to features in nature and neighboring communities. The vision of the Town of Malabar’s (Malabar) Trails and Greenways Committee (T&GC) is focused on these aspects of connectivity, taking our trail system plans beyond town borders, yet within the travel range that a user might experience in a single trek involving a TOM trail. In trail planning, the T&GC attempts to equitably address the interests of all users, whether hiker, street biker, mountain biker, or equestrian.

TOM has been blessed with many acres of protected greenways and preserves. It is estimated that such encompass over 16% of the town. While this may impact the potential tax base from private properties; it is partially offset by increased values of nearby properties and offers great potential for ecotourism, especially when considering the significant populations of nearby Palm Bay, Melbourne, and West Melbourne. Bordered to the south by Grant-Valkaria, there, Malabar has a neighboring community with very similar values to maintain a rural residential atmosphere with a great trail system to access a wealth of local protected wildlife habitats.

In the T&GC trail system, with Malabar Road located at 28° North latitude, the town’s (main) Sand Hill Trailhead, a block away, is considered “Mile Marker Zero.” Accordingly, focused on the mainland of south Brevard County, Florida, and centered on Malabar, the T&GC vision for a comprehensive trail system can be defined geographically as the area framed by the following locations:

1. Northwest - I95 on north shore of C1 canal
2. Northeast - Turkey Creek north shore at IRL
3. Southwest - I95 on south side of C54
4. Southeast - Sebastian River south shore at IRL

As an officially recognized committee of the Town of Malabar, the T&GC realizes that the majority of its efforts need to focus on trails and greenways located within the borders of Malabar; however, trails rarely end at municipal boundaries and are typically used by the citizens of the general area. Accordingly, the T&GC plans its efforts to support trail connections to its neighboring communities and development of trails within those communities to connect Malabar trail users to nearby natural features outside of Malabar.

To organize ideas and prioritize related actions, the T&GC maintains a spreadsheet list “T&GC Idea List” with a suffix of the last revision date. The latest file version is the most comprehensive and up-to-date. The list includes the following columns which can be filtered and/or used to drive various sorted interpretations: Idea, Focus, From, Type, Status, Target, Date Scheduled, Notes and Link. The “Target” column has sequence code designations of:

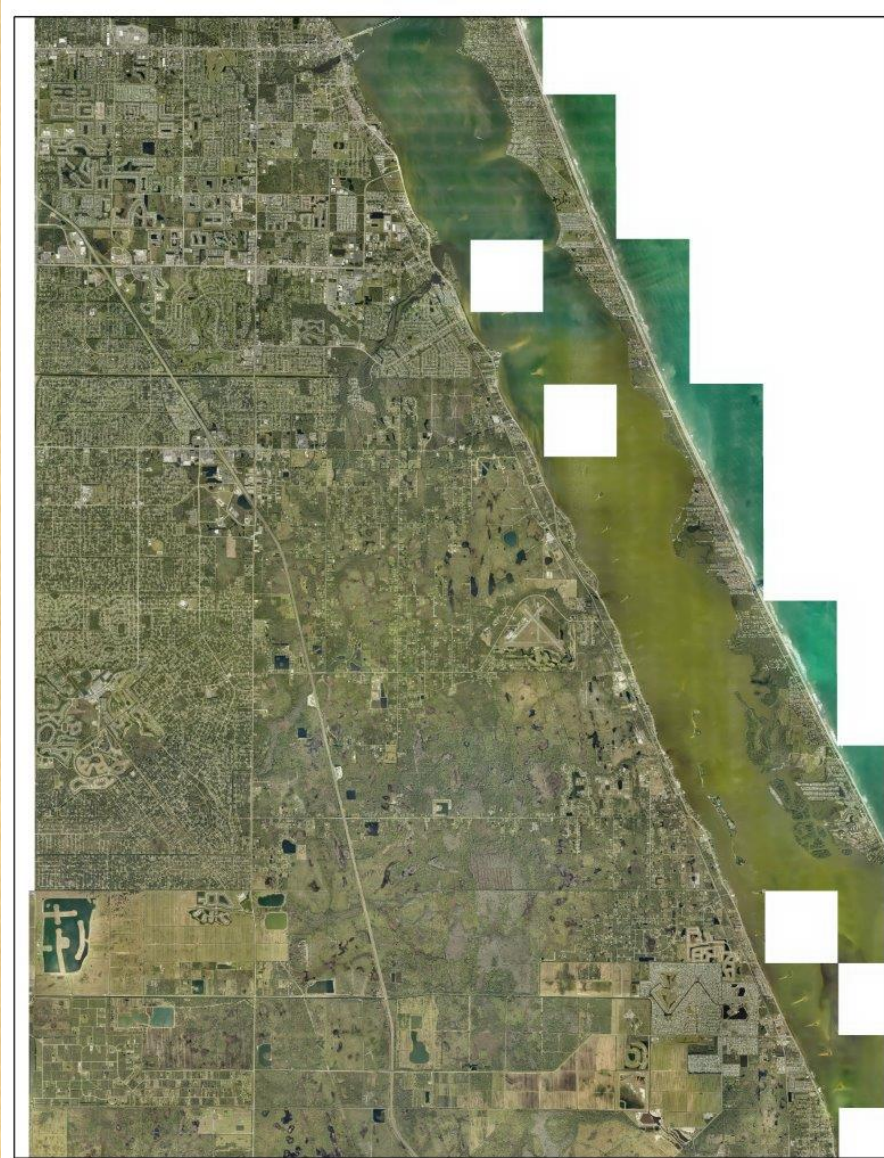
- 0 - Malabar - All
- 1 - Malabar - North
- 2 - Malabar - South
- 3 - Malabar - East
- 4 - Malabar - West
- 5 - Malabar & Neighboring Cities
- 6 - Neighboring Cities

The T&GC is comprised of a select group of Malabar residents who recognize the value of an excellent trails and greenways system. They are willing to devote their time in planning and physical trail work to bring their vision to fruition – helping to protect the local environment by sustained support of trail users able to enjoy Malabar area trails.

The vision of the Town of Malabar’s (Malabar) Trails and Greenways Committee (T&GC) is focused on these aspects of connectivity, taking our trail system plans beyond town borders, yet within the travel range that a user might experience in a single trek involving a TOM trail. In trail planning, the T&GC attempts to equitably address the interests of all users, whether hiker, street biker, mountain biker, or equestrian.

**TOM T&GC - Who We Are & Where We Have Been**  
**T&GC “Vision” – High Resolution Map of S. Brevard**

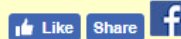
***Special Thanks to  
Chris O’Hara for  
EEL Pgm Provision  
Of High Resolution  
Maps of South  
Brevard County***



# TOM T&GC - Who We Are & Where We Have Been

## T&GC “Vision” – High Resolution USNG Standard

### Google Maps with U.S. National Grid (USNG) Coordinates Learn USNG with color-coded coordinates



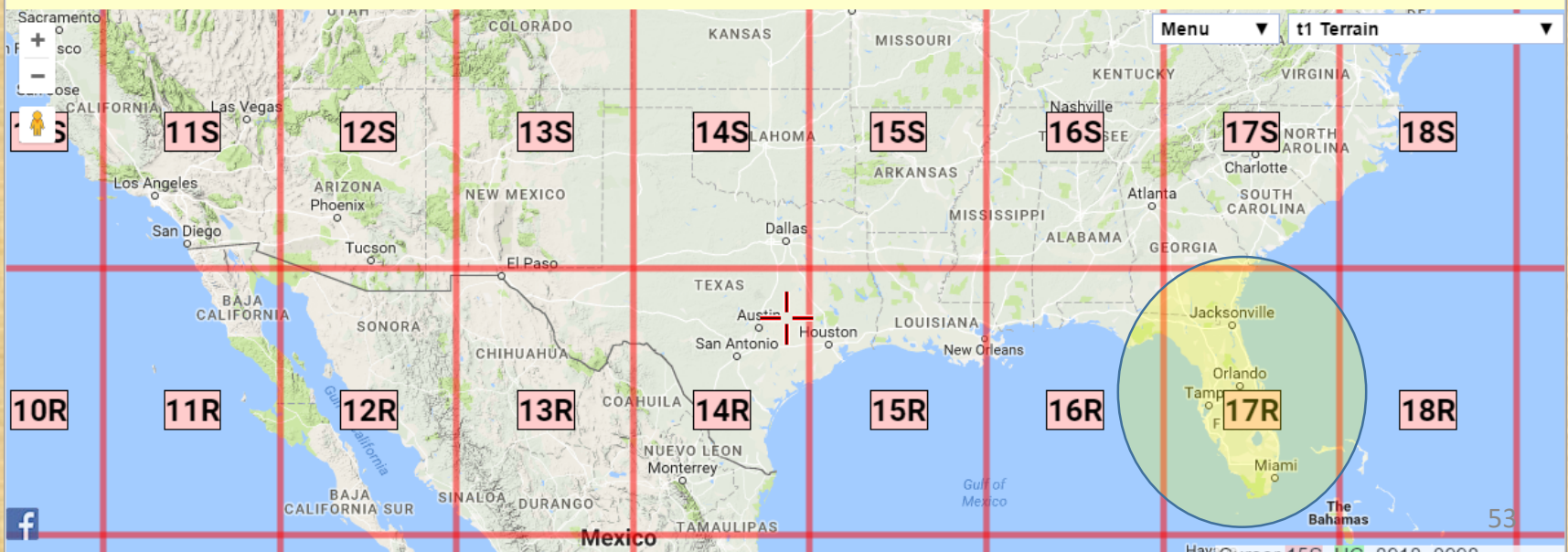
Anyone can use the following 'live' Google map to help learn about U.S. National Grid (USNG) coordinates. Zoom in far enough and a 100 meter grid appears. Use **Menu ==> Search** to find your local area. This map with a USNG grid will work in most browsers on most devices including **cell phones**.

The map is displayed by the **Gmap4** enhanced Google map viewer. For a description of all the features of Gmap4 that support U.S. National Grid coordinates and links to **USNG videos** plus other educational material, please download the [USNG and MGRS Coordinates pdf file](#). And here is a page with links for Gmap4 example maps that have USNG grids and **GIS overlays** related to [fire/rescue/search](#).

For more information about Gmap4, please visit the [Gmap4 homepage](#).

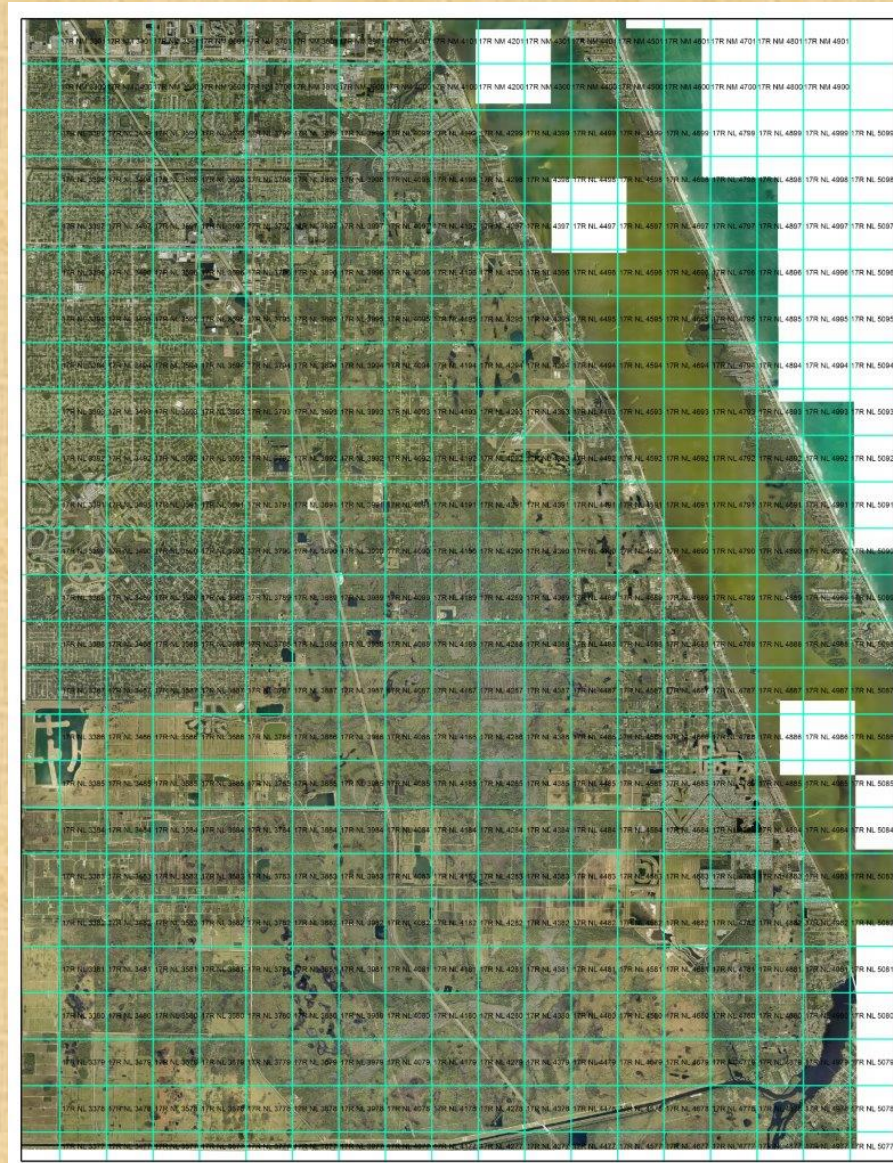
Use the Menu button to toggle the USNG coordinates grid on/off. To see the best quality **topographic maps**, please change the base map to "t4 CalTopo Hi-res" for the USA, "t5 Canada" or "t8 Topo OSM Cycle" for everywhere else. You have to zoom in before the topo maps appear.

Use this link to [view the map full screen](#).



# TOM T&GC - Who We Are & Where We Have Been

## T&GC “Vision” – High Resolution USNG Map of S. Brevard



















# TOM T&GC - Who We Are & Where We Have Been

## T&GC “Vision” – High Resolution USNG Zoom-in



# TOM T&GC - Who We Are & Where We Have Been

## Access Points Named for Local Animal

Animal Long Name	Animal Short Name	Animal Icon	Access #	Description	Closest Road for Parking
Alligator	Alligator		1	SE of Turkey Creek Bridge	Briar Creek Blvd. - Palm Bay
Manatee	Manatee		2	Canoe / Kayak Launch at Turkey Creek Sanctuary	Briar Creek Blvd. - Palm Bay
Raccoon	Raccoon		3	AI Tuttle Trail - NW Trailhead	Port Malabar Blvd. - Palm Bay (minimal)
Eastern Cottontail	Rabbit		4	Blue Pipe Trailhead	Briar Creek Blvd. - Malabar
Indigo Snake	Snake		5	Cameron Preserve NW	Briar Creek Blvd. - Malabar
River Otter	Otter		6	Cameron Preserve N (off AI Tuttle Trail)	Briar Creek Blvd. - Malabar
Gopher Tortoise	Tortoise		7	Malabar Scrub East - N Trailhead	Malabar Community Park (off Malabar Rd) - Malabar
Turkey	Turkey		8	Malabar Scrub East Trail Crossing of Briar Creek Blvd	Briar Creek Blvd. - Malabar
Owl	Owl		9	Malabar Scrub East Trail Head at Briar Creek Blvd.	Briar Creek Blvd. - Malabar
Swallow-tailed Kite	Kite		10	Cameron Preserve Trail Head at North End of Corey Rd.	Corey Rd. (North End) unpaved parking
Bobcat	Bobcat		11	Malabar Scrub West Trail Head at Paved end of Briar Creek Blvd.	Briar Creek Blvd. - Malabar
Squirrel	Squirrel		12	Malabar Scrub East Trail Head at Marie Street	Large trailhead a block away (S) - plenty of parking
Osprey	Osprey		13	Malabar Scrub West Trail Head at Paved end of Oak Harbour Lane (Country Cove)	Oak Harbour Lane
White-tailed Deer	Deer		14	Malabar Scrub West Trail Head at Englar Ave. - W	Englar Ave. - Palm Bay
Scrub Jay	Jay		15	Malabar Scrub West Trail Head at Malabar Community Park - S	Malabar Community Park (off Malabar Rd) - Malabar
Sand Hill Crane	Crane		16	Malabar Scrub East at Sand Hill Trailhead at 1400 Marie Street	Large trailhead - plenty of parking



# TOM T&GC - Who We Are & Where We Have Been

## T&GC Idea List – Excel for Sorts, Filters & PTs

T&G Idea List\_20160808.xlsx - Excel

File Home Insert Page Layout Formulas Data Review View Add-ins QuickBooks Tell me what you want to do

From Access From Web From Text From Other Sources Existing Connections New Query From Table Recent Sources Refresh All Properties Edit Links Connections Sort Filter Clear Reapply Text to Columns Flash Fill Remove Duplicates Data Consolidate Relationships Manage Data Model What-If Analysis Forecast Sheet Group Ungroup Subtotal Show Detail Hide Detail

A6 Virtual Trailhead

	A	B	C	D	E	F	G	H	I
	Idea	Focus	From	Type	Status	Target	Date Schedule	Notes	File Refs
1	Move trailhead signage at first entrance to fence on right side of road	Sand Hill Trailhead #1	T&G - Drew Thompson	Trailhead - Maintenance	1 - To be scheduled soon	0 - Malabar - All		had awaited removal of temporary AI Tuttle Trail construction signage now gone	
10	Donation of Live Oak Trees for N. Corey Rd. Trailhead	Cameron Preserve	T&G - Murray Hann	Project - (Non-Trail)	1 - To be scheduled soon	1 - Malabar - North		BMBA has surplus trees at BMBA member yard near GFT. Country Cove authorized use of pond for initial irrigation. 811 said that water pipe run lengthwise directly under current location of picnic table. Table will need to be relocated if to be under shade of trees.	Oak Trees at North Corey Road Trailhead - Orange.jpg
11	Canoe & Kayak Trailhead at Rocky Point North End "Triangle"	Water Trailhead	TC - Grant Ball	Research	1 - To be scheduled soon	3 - Malabar - East		Grant mentioned triangle owned by State of FL and unkempt - possible use as kayak & canoe launch trailhead	Rocky Point Triangle at US 1_Req for Location Clarification.msg
12	Develop list of civic / conservation projects	Info Org	T&G - Drew Thompson	Civic Service / Scout Project	2 - To be scheduled future	0 - Malabar - All		Need scouts or Trail Life (Kenneth, Bukowski) volunteers	
13	Idea about the Malabar Community Park kiosk: provide QR codes on signs for smart phones that advertise the Sand hill Trailhead.	Trail kiosks	T&G - Murray Hann	Trail - Enhancement	2 - To be scheduled future	0 - Malabar - All		QR code technology research - printing and scan interpretation	
14	Request of Park Board that streetlights be put in on Malabar Road for the Malabar Community Park and the Disc Golf Park. Perhaps, even lights between the park and the one at Marie Street and Malabar Road.	Parks & Recreation Board	T&G - Hans Kemmler	TOM	3 - Pending resources	0 - Malabar - All		Effort may best be made relative to the road widening study / Malabar Rd.	
15	Old Schoolhouse / Old Malabar Rd "Old Trail"	Trails	T&G - Bob Wilbur	Trail - New	3 - Pending resources	0 - Malabar - All		At AI Tuttle Trail connection at Sand Hill Trailhead #1 create new trail behind old schoolhouse with use of old Malabar Rd. Base, back to Malabar Scrub Sanctuary (paved?)	
16	North-South Corey Rd. Bike Trail	Corey Rd.	T&G - Murray Hann	Trail - New	3 - Pending resources	0 - Malabar - All		Tube ditch next to Corey Rd. Put in north-south	

Ready

# TOM T&GC - Who We Are & Where We Have Been

## T&GC Idea List – Documentation & Prioritization

Sort

Add Level  Delete Level  Copy Level  Options...  My data has headers

Column	Sort On	Order	
Sort by	Status	Values	A to Z
Then by	Date Scheduled	Values	Newest to Oldest
Then by	Target	Values	A to Z

OK Cancel

# TOM T&GC - Who We Are & Where We Have Been

## T&GC Idea List - Fields

Count of Notes	Idea	Target	0 - Malabar All	1 - Malabar North	2 - Malabar South	3 - Malabar East	4 - Malabar West	5 - Malabar & Neighbor ing Cities	3 - Malabar All	2 - Malabar All	1 - Malabar All	6 - Neighbor ing Cities	Grand Total
0 - Active Work in Progress	Virtual Trailhead		1										1
	ADA Restroom Planning,ordering, site prep, installation					1							1
	Helmet for trail users?								1				1
	Trail Use waivers - for minors - decrease liability by warning parents									1			1
	Project planning - Morris Smith Update at P&R Bd Meeting			1									1
	Develop missing trail segments within Cameron to accommodate safer one-way travel, connecting to existing trails in Malabar Scrub Sanctuary East and West			1									1
<b>0 - Active Work in Progress Total</b>			<b>1</b>	<b>2</b>		<b>1</b>			<b>1</b>	<b>1</b>			<b>6</b>
1 - To be scheduled soon	Move trailhead signage at first entrance to fence on right side of road		1										1
	Atz Rd. East - New Trailhead		1										1
	Donation of Live Oak Trees for N. Corey Rd. Trailhead			1									1
	Canoe & Kayak Trailhead at Rocky Point North End "Triangle"					1							1
<b>1 - To be scheduled soon Total</b>			<b>2</b>	<b>1</b>		<b>1</b>							<b>4</b>
2 - To be scheduled future	Develop list of civic / conservation projects		1										1
	Idea about the Malabar Community Park kiosk: provide QR codes on signs for smart phones that advertise the Sand hill Trailhead.		1										1

**TOM T&GC - Who We Are & Where We Have Been  
Exploring Possible Lagoon Trailhead  
“Triangle Property” - North of Rocky Pt. Rd.**



**TOM T&GC - Who We Are & Where We Have Been**  
**Looking South at Marie St. & Malabar Rd.**  
**Down the Coastal Ridge Linear Trail**



**TOM T&GC - Who We Are & Where We Have Been**  
**Planning New Trail Head for Access to Jordon Scrub (EEL Pgm) South of Malabar Rd.**

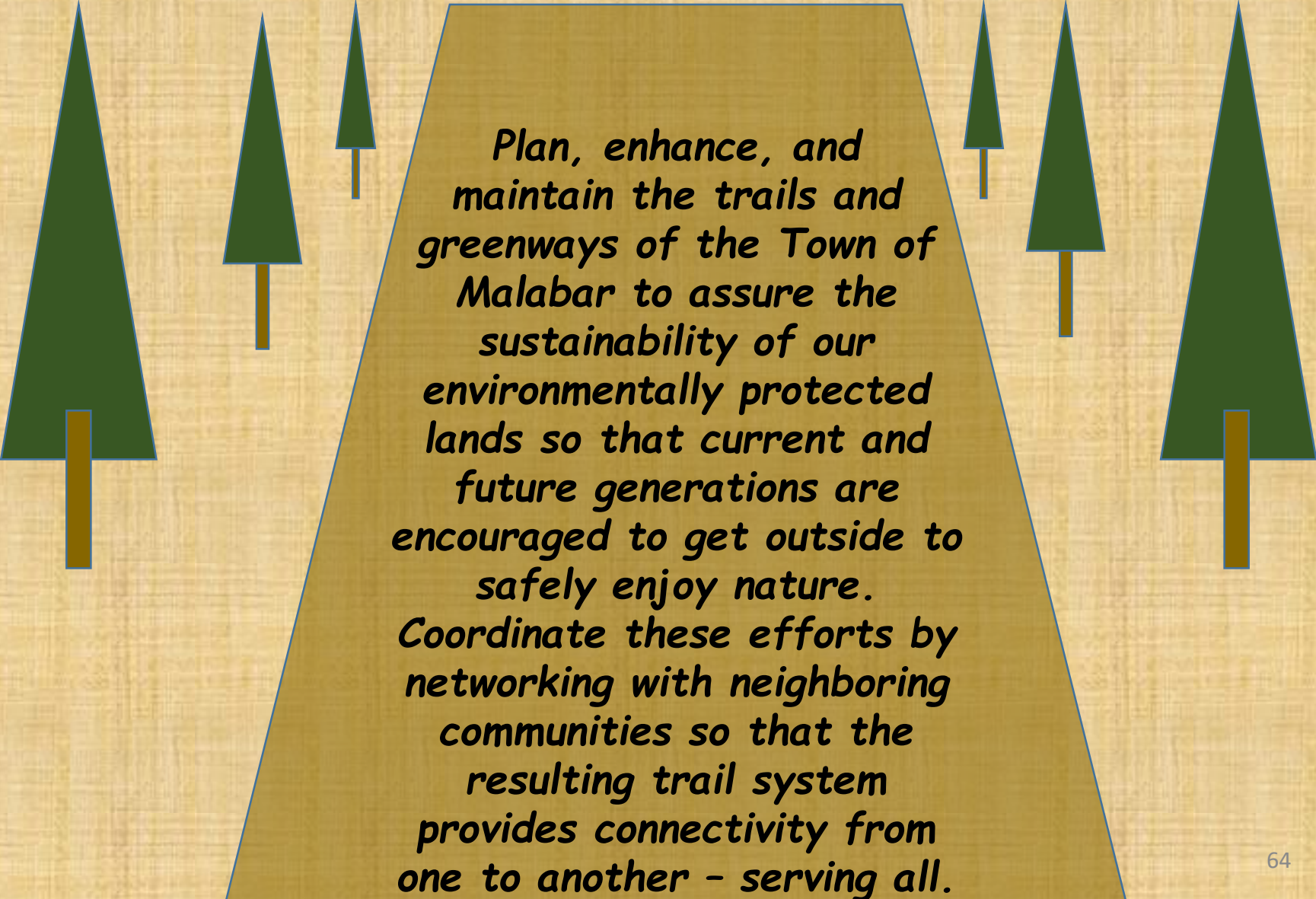


**TOM T&GC - Who We Are & Where We Have Been**  
**Looking at New Connections**  
**Turkey Creek & Brook Hollow Area**  
**Trails Near Malabar Scrub Sanctuary East**



# TOM T&GC - Who We Are & Where We Have Been

## T&GC UNOFFICIAL MISSION




*Plan, enhance, and maintain the trails and greenways of the Town of Malabar to assure the sustainability of our environmentally protected lands so that current and future generations are encouraged to get outside to safely enjoy nature. Coordinate these efforts by networking with neighboring communities so that the resulting trail system provides connectivity from one to another - serving all.*



# TOM T&GC - Who We Are & Where We Have Been

## T&GC UNOFFICIAL MISSION – Key Words



*Plan, enhance, and maintain the trails and greenways of the Town of Malabar to assure the **sustainability** of our environmentally protected lands so that current and future generations are encouraged to get outside to safely enjoy nature.*

***Coordinate** these efforts by networking with neighboring communities so that the resulting trail system provides **connectivity** from one to another - serving all.*

TOM T&GC - Who We Are & Where We Have Been

# Connectivity? ... Let's Talk – TOM T&GC Has Some Ideas to Consider!

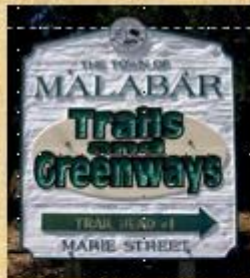
67

G-V T&GB & TOM T&GC & TPO & EEL Pgm  
Joint Workshop on South Brevard Trails  
Thursday January 12, 2017  
6:00 PM – 8:00 PM

Grant-Valkaria (G-V) Town Hall - 1449 Valkaria Rd, Grant-Valkaria, Florida

TOWN OF MALABAR (TOM) TRAILS & GREENWAYS "T&GC"  
TOM T&GC – Talking Connectivity

presented by Murray Hann, TOM T&GC Co-Chair  
SP TPO BPTAC Chair



# TRAILS AND GREENWAYS COMMITTEE (T&GC)

*Other* UNOFFICIAL MISSION



**To see you  
on the trail!**

**THANK  
YOU**



# Any Questions?

