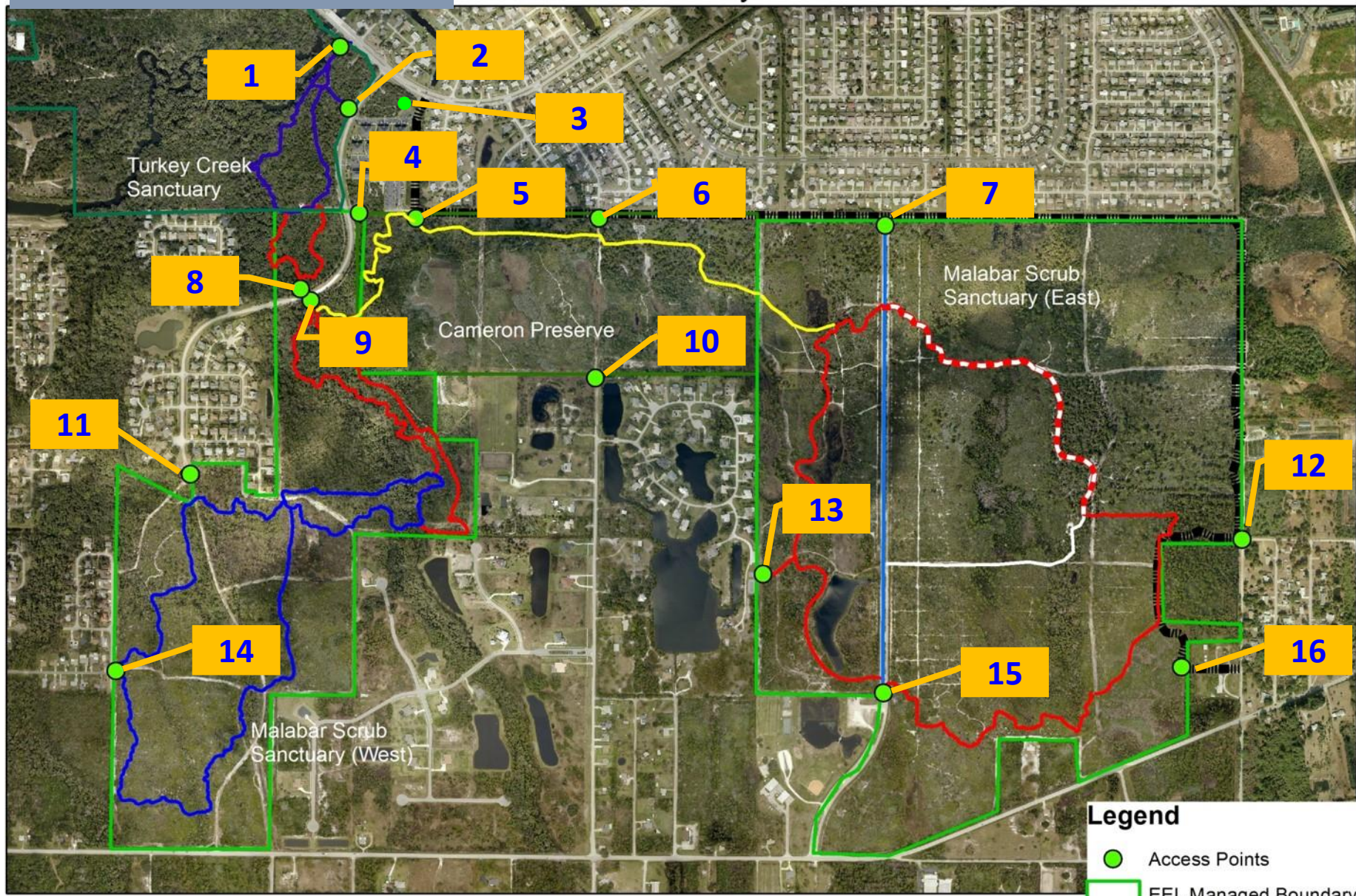


# Access Points

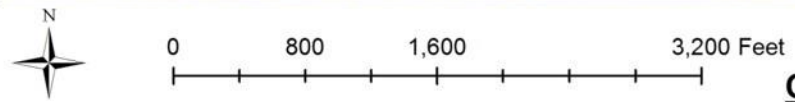
## Malabar Trail System

## North of Malabar Road



**Legend**

- Access Points
- EEL Managed Boundary
- Cameron Preserve
- ▬ Paved Trail



**Only marked trails are shown on the map.**

## # 10 - Cameron Preserve Trail Head at North End of Corey Rd.



Officially located at 1100 Corey Road, Malabar, FL 32950, it is super easy to find the Cameron Preserve. Just head to south Brevard County and find Malabar Road. If you are traveling from I-95, take to exit 173. From Malabar Road at I-95, head east for 2.7 miles and then turn left on Corey Road. If traveling south from Palm Bay or North from Barefoot Bay, from Malabar Road at US Hwy 1, head east for 1.7 miles and then turn right on Corey Road. Go north on Corey Road for about 0.7 miles, the pavement ceases and you are at the trailhead at the North end of Corey Road, Malabar, FL. You will see a fence, a sign, and a kiosk. Your Cameron Preserve adventure is about to begin.

Access #	Description	Closest Road for Parking
1	SE of Turkey Creek Bridge	Briar Creek Blvd. - Palm Bay
2	Canoe / Kayak Launch at Turkey Creek Sanctuary	Briar Creek Blvd. - Palm Bay
3	Al Tuttle Trail - NW Trailhead	Port Malabar Blvd. - Palm Bay (minimal)
4	Blue Pipe Trailhead	Briar Creek Blvd. - Malabar
5	Cameron Preserve NW	Briar Creek Blvd. - Malabar
6	Cameron Preserve N (off Al Tuttle Trail)	Briar Creek Blvd. - Malabar
7	Malabar Scrub East - N Trailhead	Malabar Community Park (off Malabar Rd) - Malabar
8	Malabar Scrub East Trail Crossing of Briar Creek Blvd	Briar Creek Blvd. - Malabar
9	Malabar Scrub East Trail Head at Briar Creek Blvd.	Briar Creek Blvd. - Malabar
<b>10</b>	<b>Cameron Preserve Trail Head at North End of Corey Rd.</b>	<b>Corey Rd. (North End) unpaved parking</b>
11	Malabar Scrub West Trail Head at Paved end of Briar Creek Blvd. (Brook Hollow)	Briar Creek Blvd. - Malabar
12	Malabar Scrub East Trail Head at Marie Street	Large trailhead a block away (S) - plenty of parking ADA restroom anticipated Spring 2016
13	Malabar Scrub West Trail Head at Paved end of Oak Harbour Lane (Country Cove)	Oak Harbour Lane
14	Malabar Scrub West Trail Head at Englar Ave. - W	Englar Ave. - Palm Bay
15	Malabar Scrub West Trail Head at Malabar Community Park - S	Malabar Community Park (off Malabar Rd) – Malabar
16	Malabar Scrub East at Sand Hill Trailhead at 1400 Marie Street (end of paved Al Tuttle Trail)	Large trailhead - plenty of parking ADA restroom anticipated Spring 2016