

Trails of Northern Malabar Trail & Greenways Committee Town of Malabar

originally presented to

Brevard County City Clerks Association (BCCCA)
Chapter of Florida Association of City Clerks (FACC)

Monthly Meeting

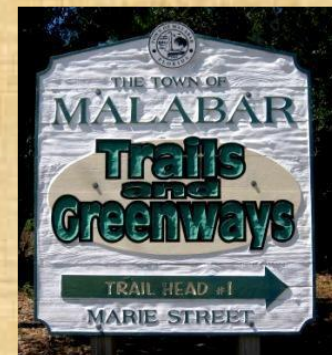
MONDAY JANUARY 11, 2016

12:00 – 1:00 PM

TOWN OF MALABAR – TOWN HALL

2725 MALABAR ROAD

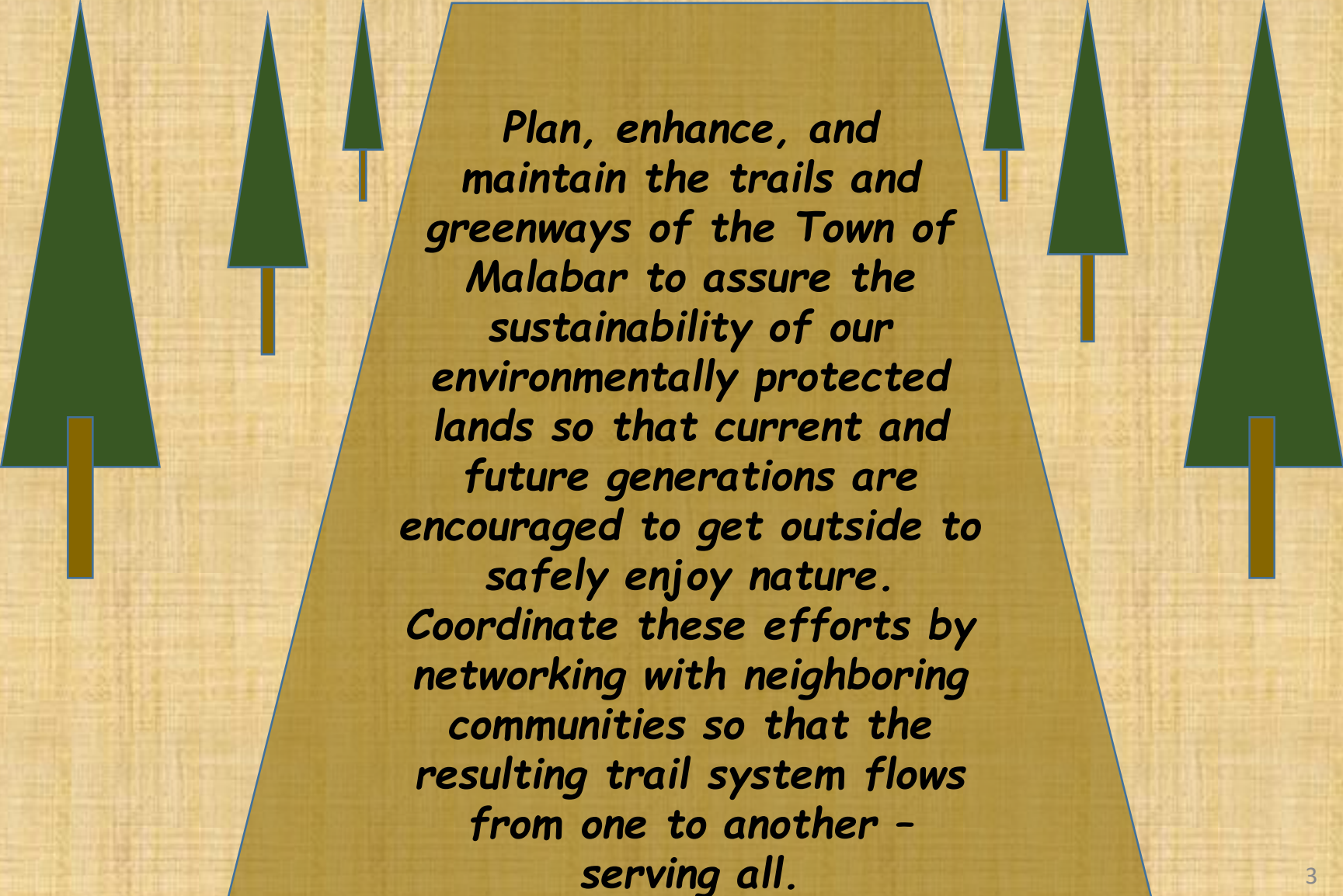
MALABAR, FLORIDA



“Forest Bathing” - A Healthy Idea

- 1. It's good for your heart.** Time spent outdoors in a forest lowers blood pressure and the stress hormones cortisol and adrenaline.
- 2. It soothes your brain.** Being in greenery decreases anxiety, depression, anger and fatigue for adults. Research shows that kids with ADHD who spend time in natural outdoor environments have a reduction in symptoms.
- 3. It speeds recovery.** People in the hospital given views of greenery, especially trees, after surgery, had shorter stays, took fewer painkillers, and had fewer complications than those who stared out at a blank wall.
- 4. It increases immunity.** When you inhale fresh air in a forest, you breathe in plant chemicals that have antibacterial and antifungal qualities and increase the immune system's disease fighting abilities.

TRAILS AND GREENWAYS COMMITTEE (T&GC) UNOFFICIAL MISSION



Plan, enhance, and maintain the trails and greenways of the Town of Malabar to assure the sustainability of our environmentally protected lands so that current and future generations are encouraged to get outside to safely enjoy nature. Coordinate these efforts by networking with neighboring communities so that the resulting trail system flows from one to another - serving all.

TRAILS AND GREENWAYS COMMITTEE

MEMBERSHIP – STRUCTURE – MEETINGS – WORK EVENTS

MEMBERSHIP – **Now Fully Staffed!**

Drew Thompson – Chair & TOM Rep / TPO BPTAC

Murray Hann – Vice Chair

Hans Kemmler – Liaison, Parks & Recreation Board

Cindi Kelly – TOM Recording Secretary

Collette Buffaloe – Committee Member

Annelie Harvey - Committee Member

Pat Voltaire – Committee Member

Bob Wilbur – Committee Member



STRUCTURE

T&GC submits fiscal impacting ideas via Parks & Recreation Board

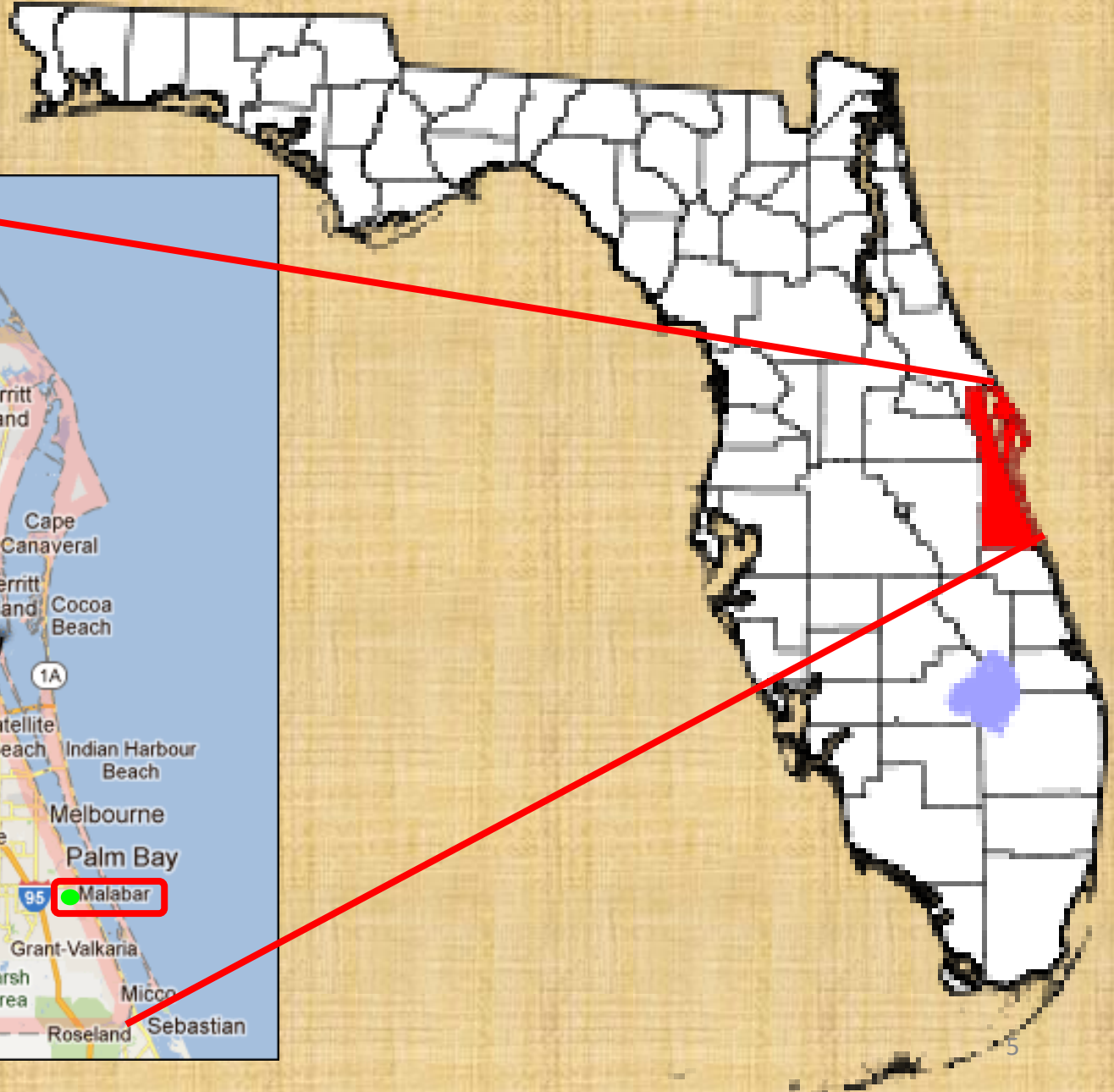
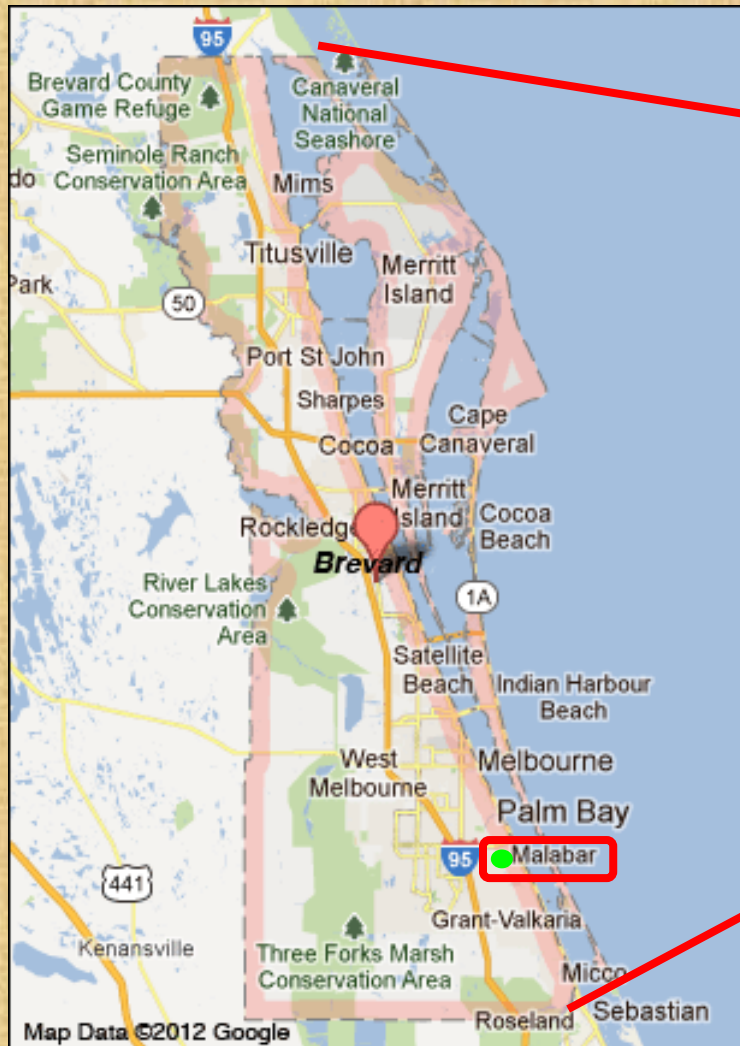
MEETINGS

Monthly – 2nd Monday 6:00 PM, TOM Town Hall

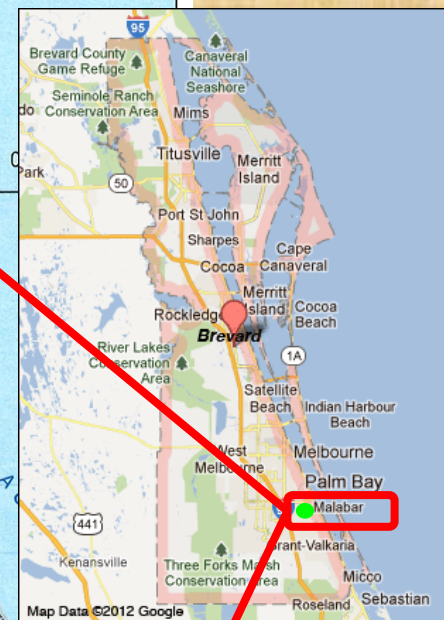
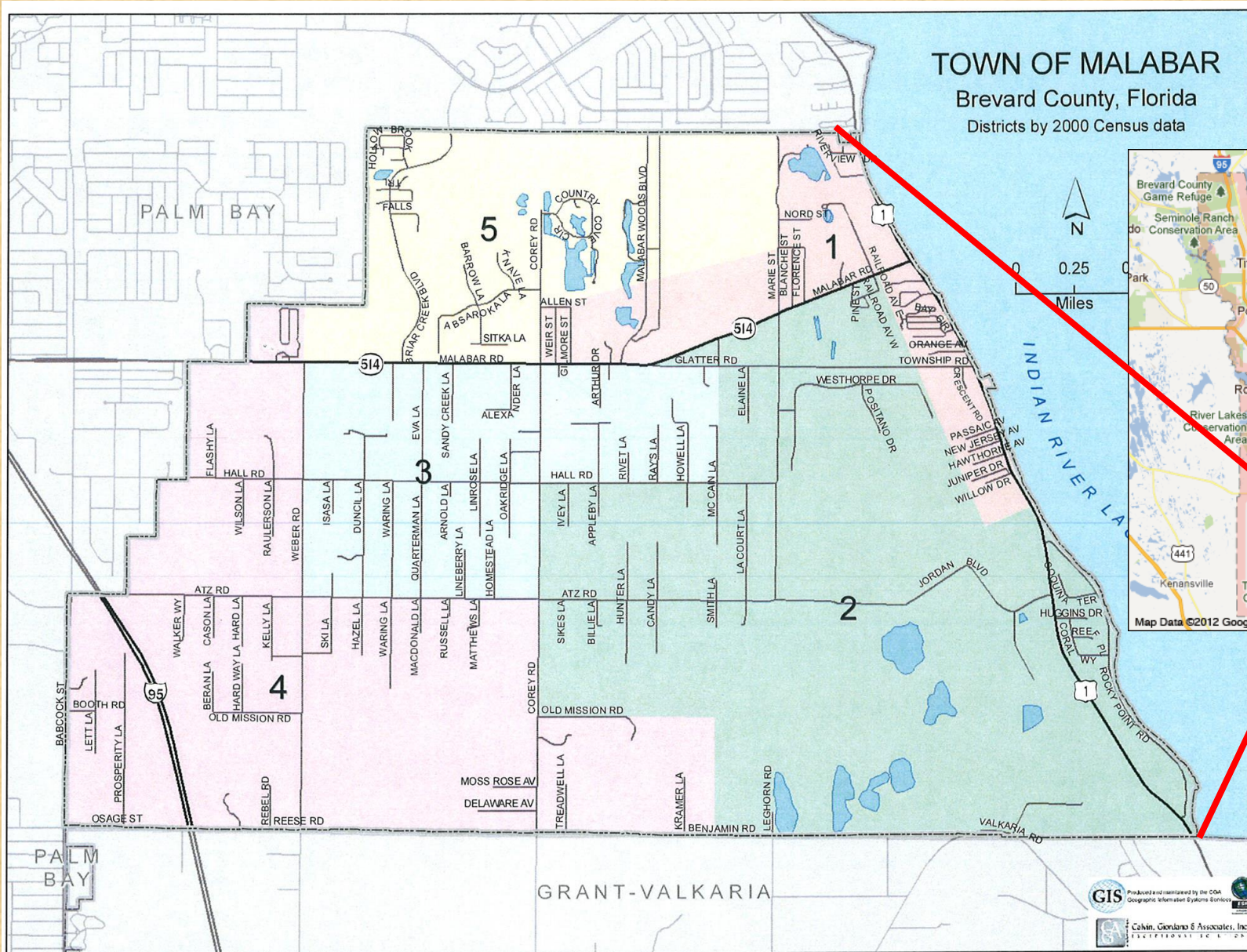
WORK EVENTS

Scheduled at monthly meeting (Sat 31 Oct 8 - Noon @ N. Corey Rd TH)

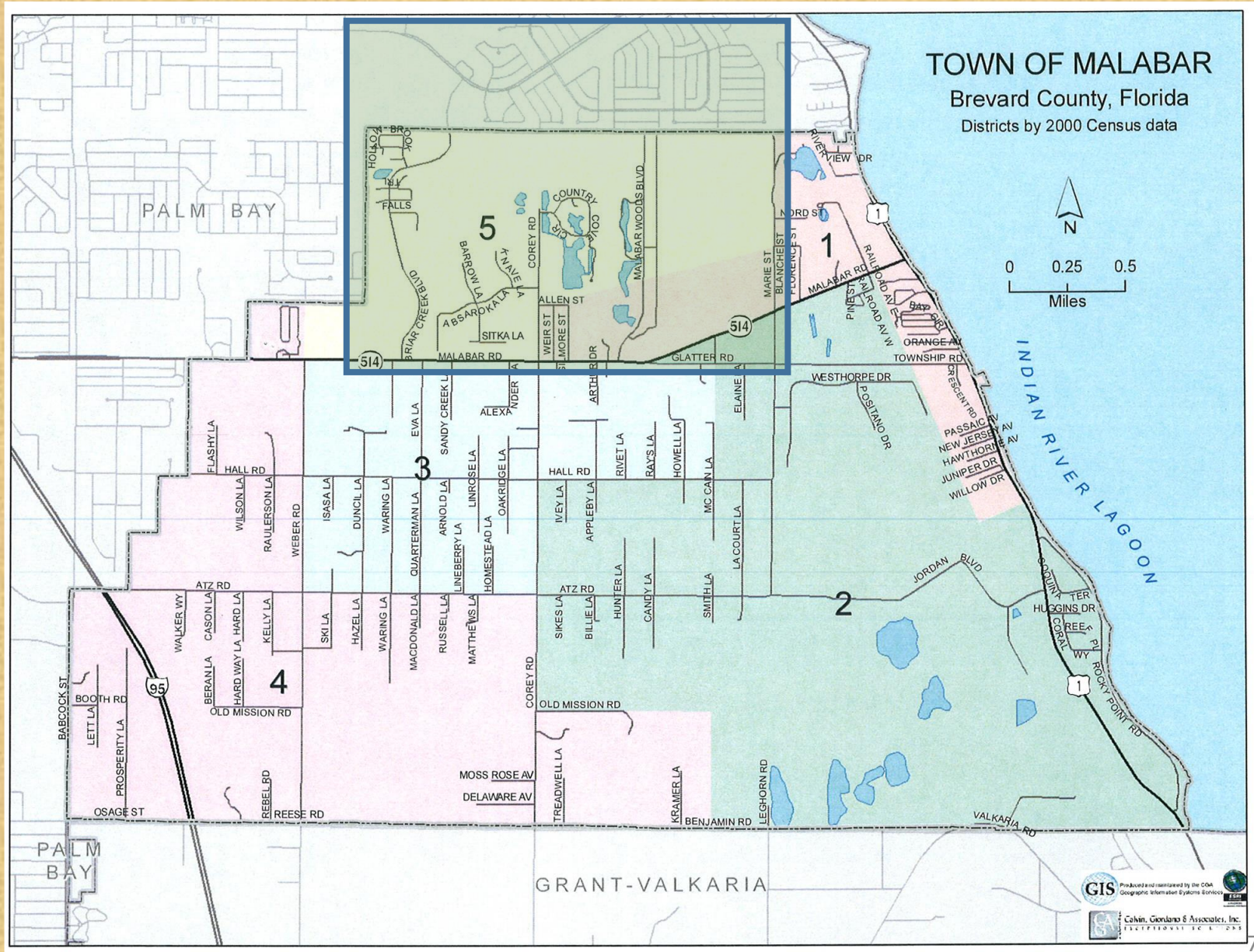
Location – Brevard County, Florida



Location – Town of Malabar in Brevard County



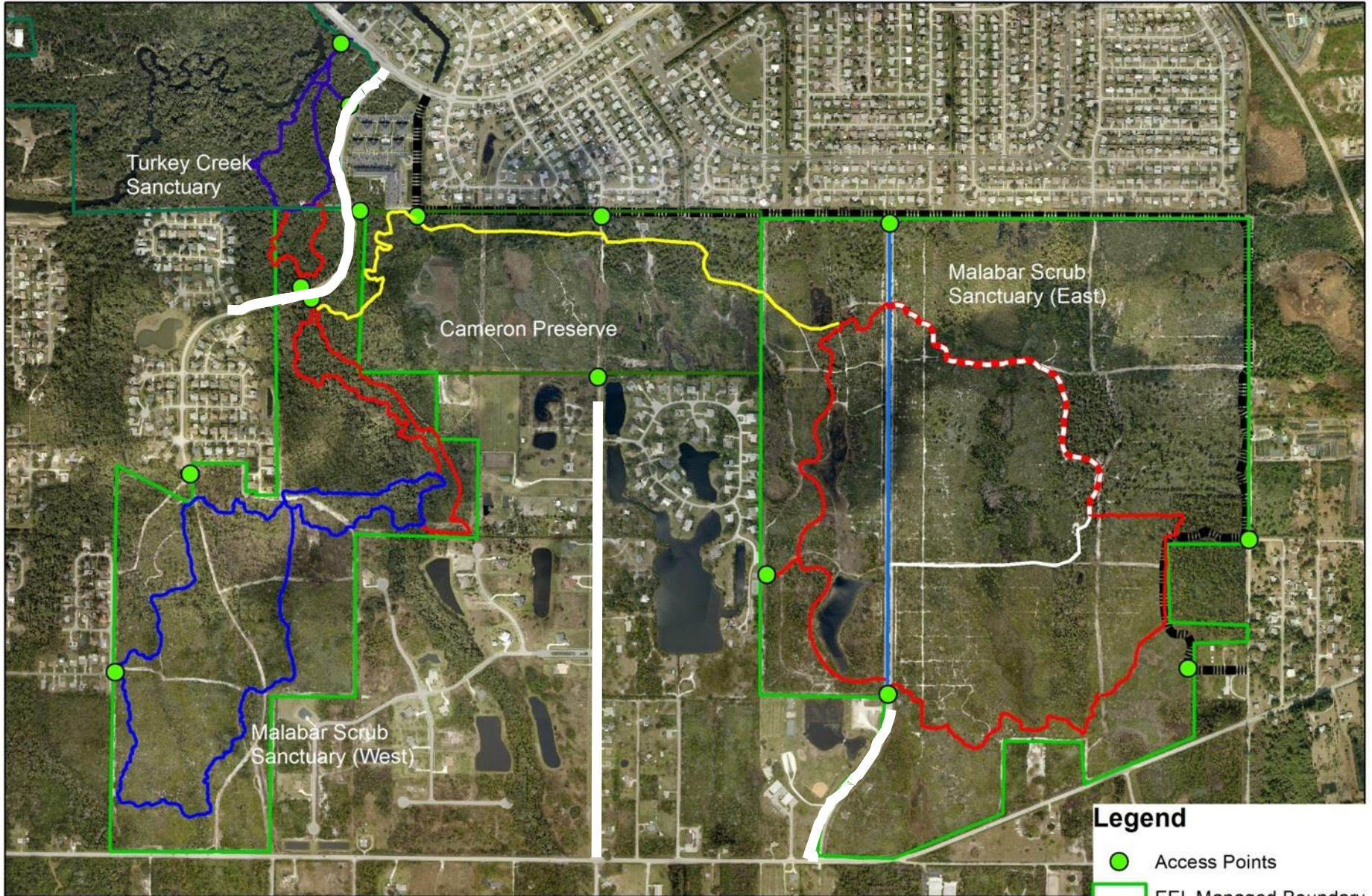
Location – Northern Malabar (north of Malabar Rd)



Historical Trails

Malabar Trail System

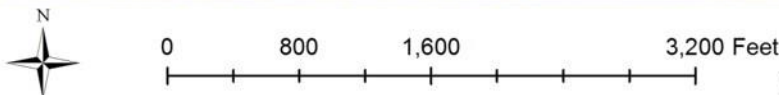
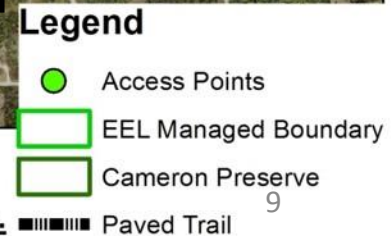
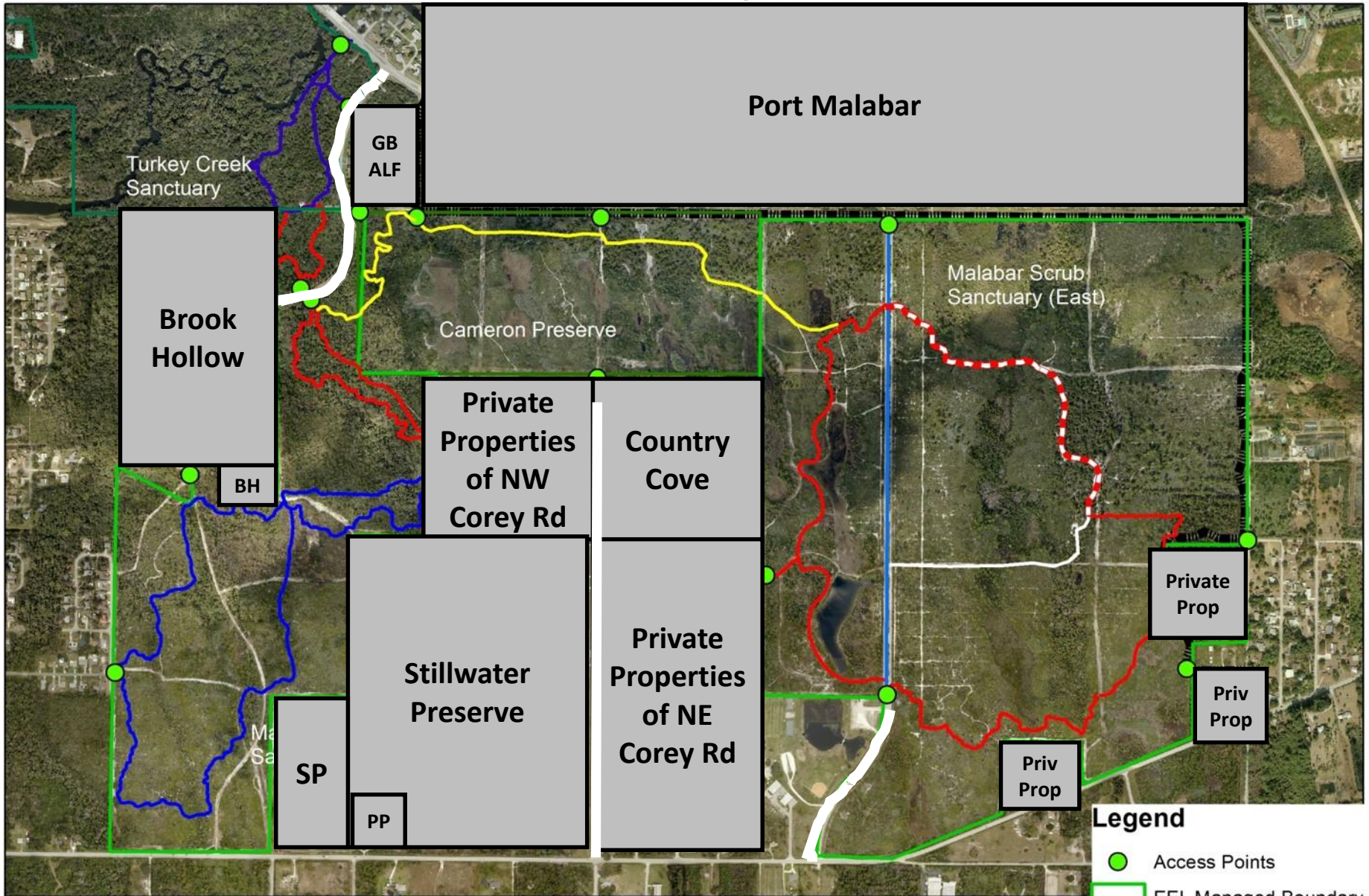
North of Malabar Road



Legend

-  Access Points
-  EEL Managed Boundary
-  Cameron Preserve
-  Paved Trail

Only marked trails are shown on the map.

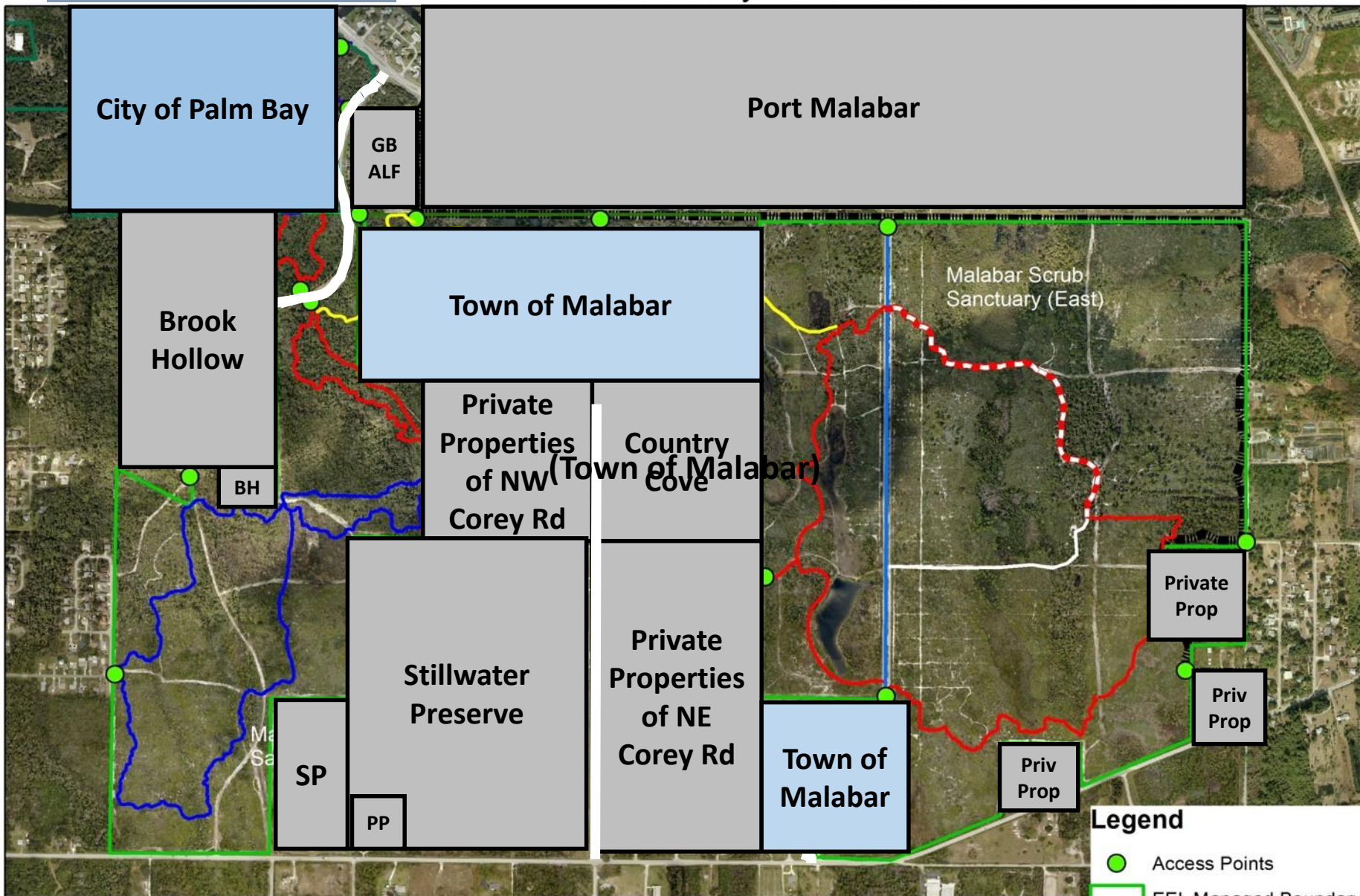


Only marked trails are shown on the map.

+ City/Town

Malabar Trail System

North of Malabar Road



Legend

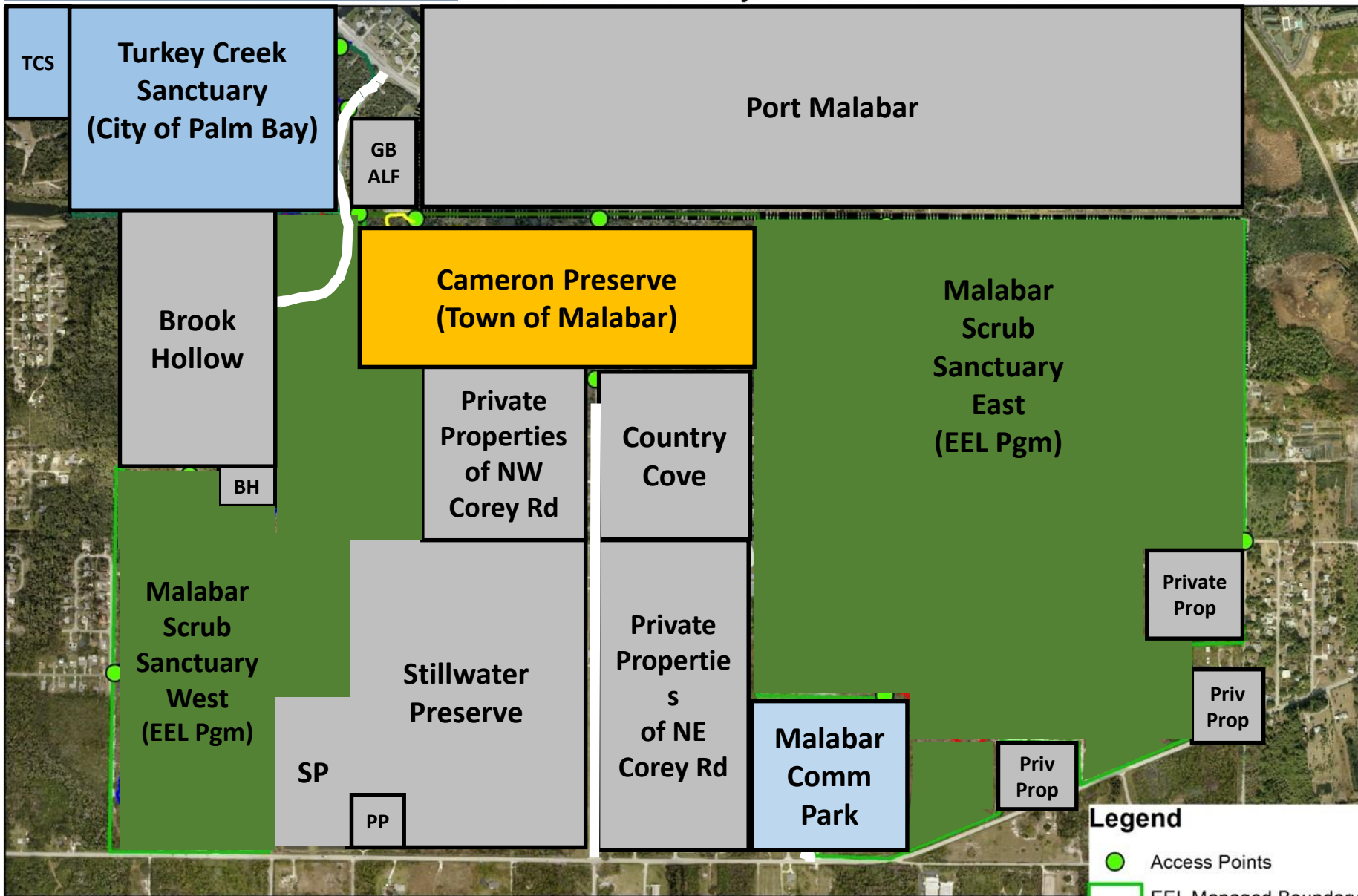
- Access Points
- ▭ EEL Managed Boundary
- ▭ Cameron Preserve
- ▭ Paved Trail

Only marked trails are shown on the map.

"Cameron Bridge"

Malabar Trail System

North of Malabar Road



0 800 1,600 3,200 Feet

Only marked trails are shown on the map.

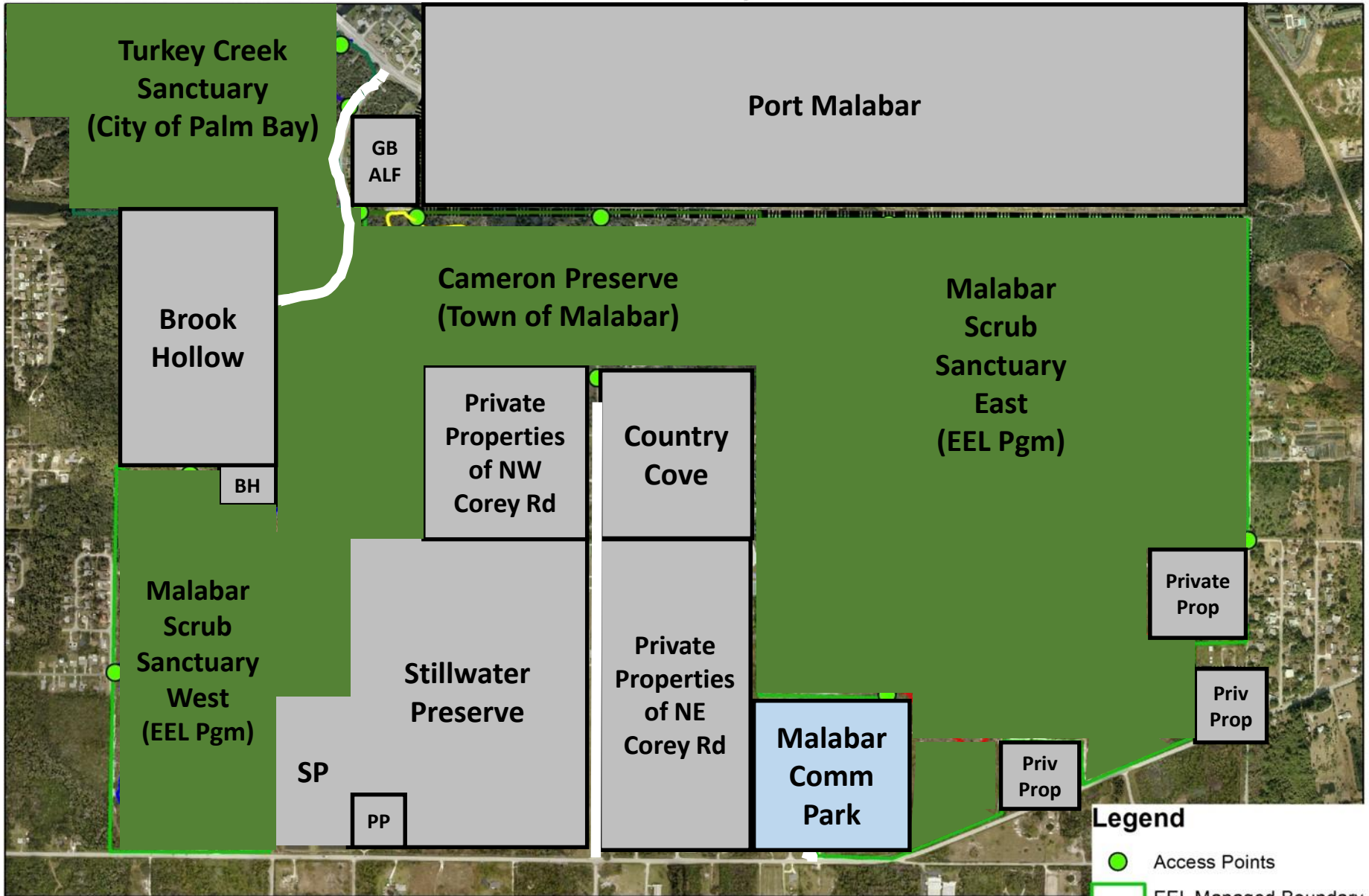
Legend

- Access Points
- EEL Managed Boundary
- Cameron Preserve
- Paved Trail

Greenway

Malabar Trail System

North of Malabar Road



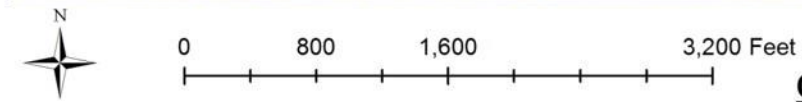
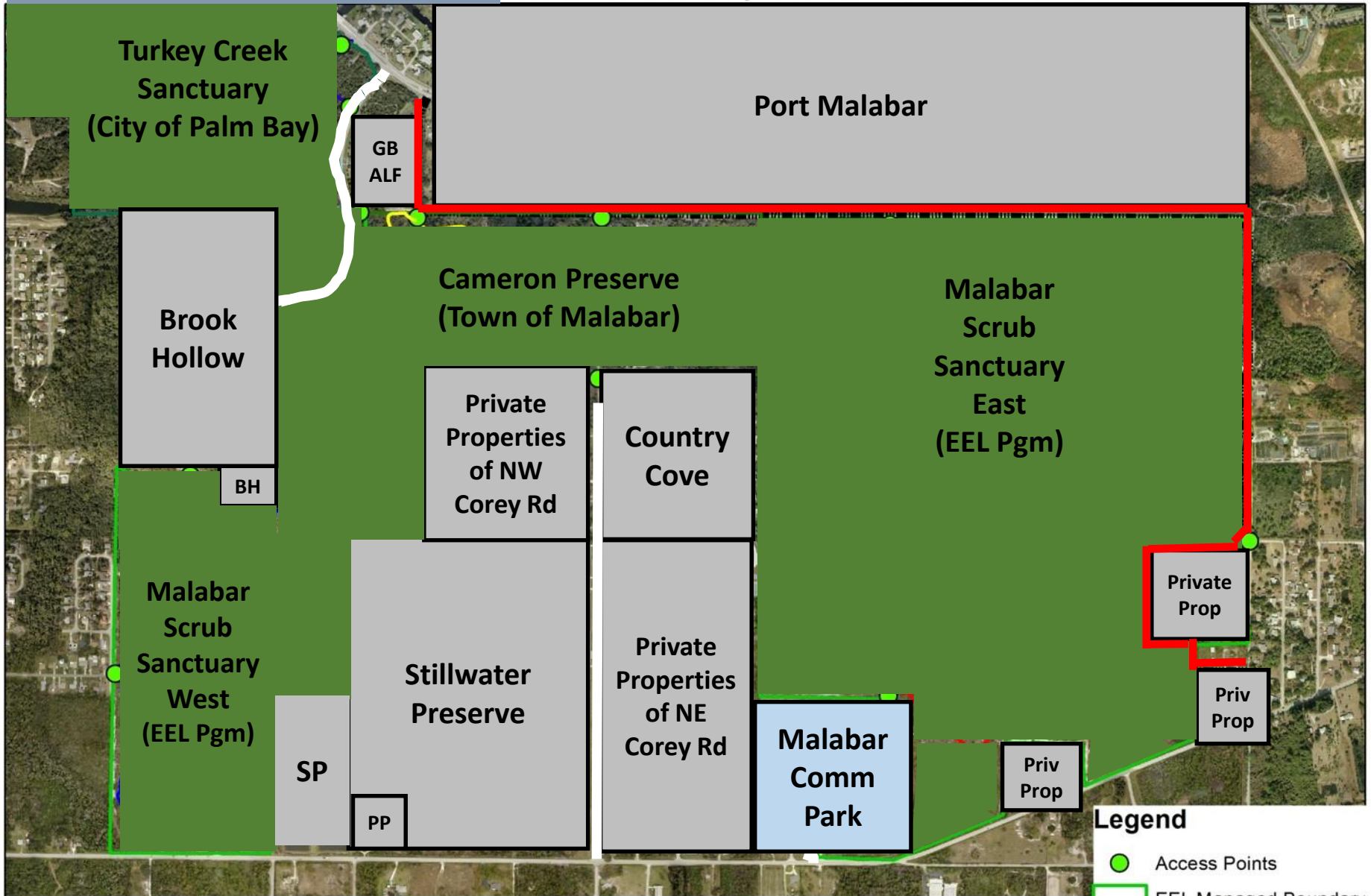
0 800 1,600 3,200 Feet

Only marked trails are shown on the map.

Al Tuttle (paved)

Malabar Trail System

North of Malabar Road



- Legend**
- Access Points
 - ▭ EEL Managed Boundary
 - ▭ Cameron Preserve
 - ▭ Paved Trail

Only marked trails are shown on the map.

10 - Al Tuttle Trail - NW Trailhead



3 & 5 (midway) - Al Tuttle Trail – Glenbrooke



Al Tuttle Trail – Looking South (after Bridge)



Al Tuttle Trail – Bridge Parallel to Marie St – Looking South



Al Tuttle Trail – Bridge Parallel to Marie St – Looking East

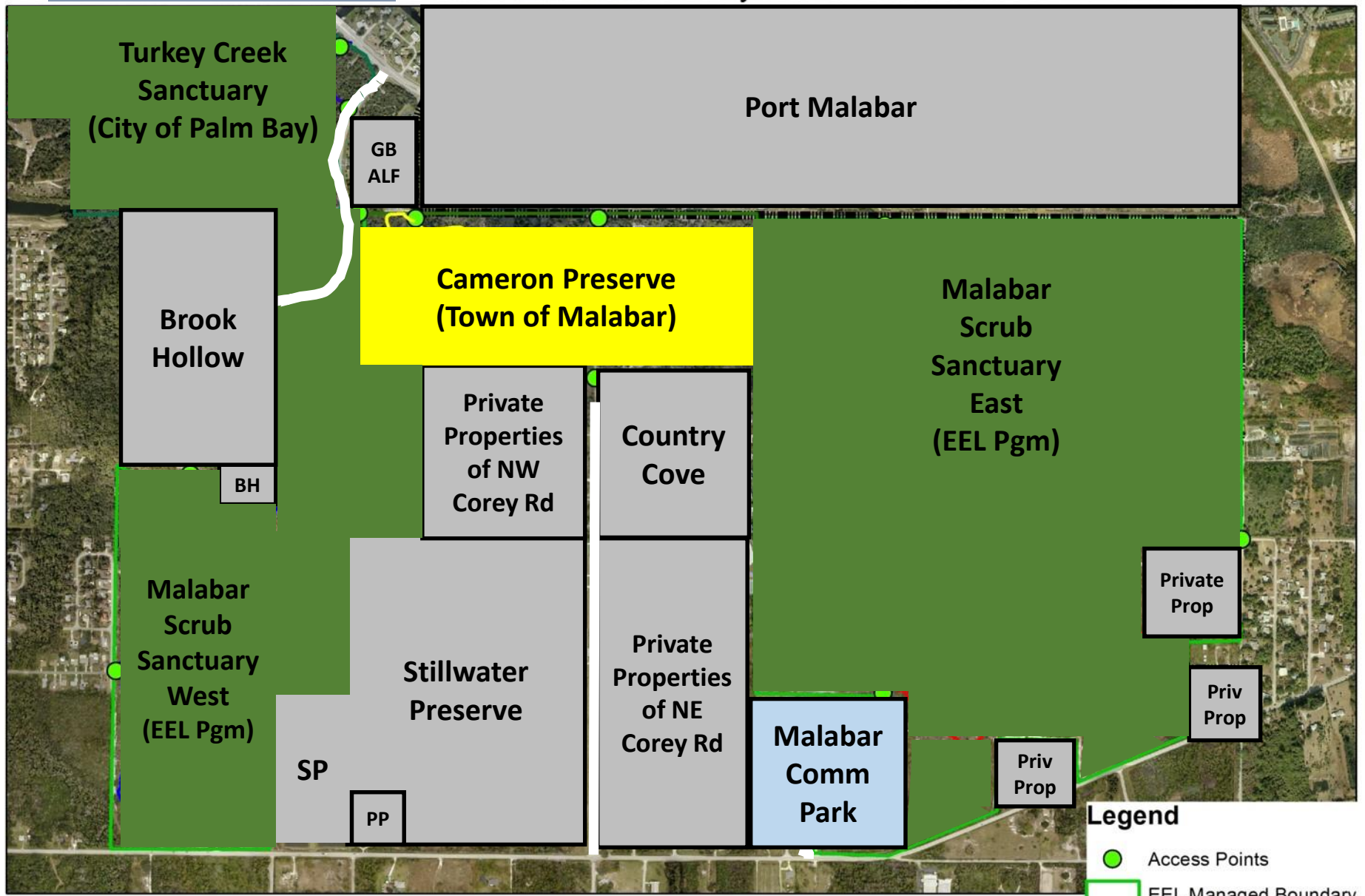


Al Tuttle Trail – Looking South (after Bridge)



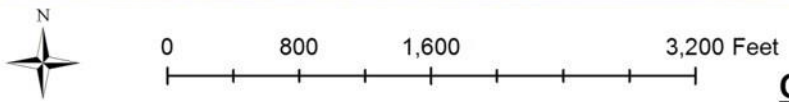
Cameron

Malabar Trail System



Legend

- Access Points
- EEL Managed Boundary
- Cameron Preserve
- Paved Trail

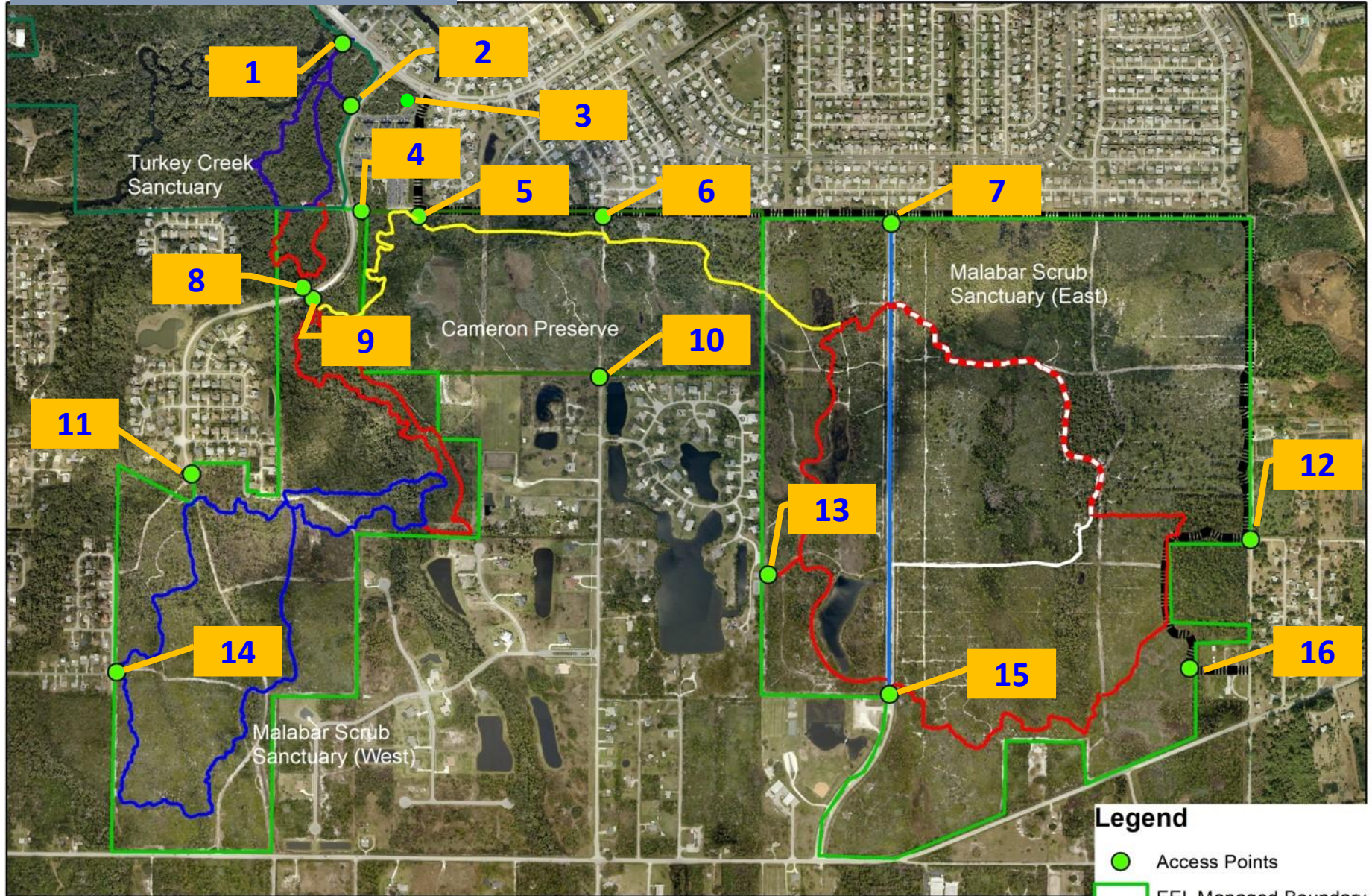


Only marked trails are shown on the map.

Access Points

Malabar Trail System

North of Malabar Road



Legend

- Access Points
- EEL Managed Boundary
- Cameron Preserve
- Paved Trail

Only marked trails are shown on the map.

10 - Cameron Preserve Trail Head at North End of Corey Rd.



Officially located at 1100 Corey Road, Malabar, FL 32950, it is super easy to find the Cameron Preserve. Just head to south Brevard County and find Malabar Road. If you are traveling from I-95, take to exit 173. From Malabar Road at I-95, head east for 2.7 miles and then turn left on Corey Road. If traveling south from Palm Bay or North from Barefoot Bay, from Malabar Road at US Hwy 1, head east for 1.7 miles and then turn right on Corey Road. Go north on Corey Road for about 0.7 miles, the pavement ceases and you are at the trailhead at the North end of Corey Road, Malabar, FL. You will see a fence, a sign, and a kiosk. Your Cameron Preserve adventure is about to begin.

| Access # | Description | Closest Road for Parking |
|-----------|---|--|
| 1 | SE of Turkey Creek Bridge | Briar Creek Blvd. - Palm Bay |
| 2 | Canoe / Kayak Launch at Turkey Creek Sanctuary | Briar Creek Blvd. - Palm Bay |
| 3 | Al Tuttle Trail - NW Trailhead | Port Malabar Blvd. - Palm Bay (minimal) |
| 4 | Blue Pipe Trailhead | Briar Creek Blvd. - Malabar |
| 5 | Cameron Preserve NW | Briar Creek Blvd. - Malabar |
| 6 | Cameron Preserve N (off Al Tuttle Trail) | Briar Creek Blvd. - Malabar |
| 7 | Malabar Scrub East - N Trailhead | Malabar Community Park (off Malabar Rd) - Malabar |
| 8 | Malabar Scrub East Trail Crossing of Briar Creek Blvd | Briar Creek Blvd. - Malabar |
| 9 | Malabar Scrub East Trail Head at Briar Creek Blvd. | Briar Creek Blvd. - Malabar |
| 10 | Cameron Preserve Trail Head at North End of Corey Rd. | Corey Rd. (North End) unpaved parking |
| 11 | Malabar Scrub West Trail Head at Paved end of Briar Creek Blvd. (Brook Hollow) | Briar Creek Blvd. - Malabar |
| 12 | Malabar Scrub East Trail Head at Marie Street | Large trailhead a block away (S) - plenty of parking ADA restroom anticipated Spring 2016 |
| 13 | Malabar Scrub West Trail Head at Paved end of Oak Harbour Lane (Country Cove) | Oak Harbour Lane |
| 14 | Malabar Scrub West Trail Head at Englar Ave. - W | Englar Ave. - Palm Bay |
| 15 | Malabar Scrub West Trail Head at Malabar Community Park - S | Malabar Community Park (off Malabar Rd) – Malabar |
| 16 | Malabar Scrub East at Sand Hill Trailhead at 1400 Marie Street (end of paved Al Tuttle Trail) | Large trailhead - plenty of parking ADA restroom anticipated Spring 2016 |

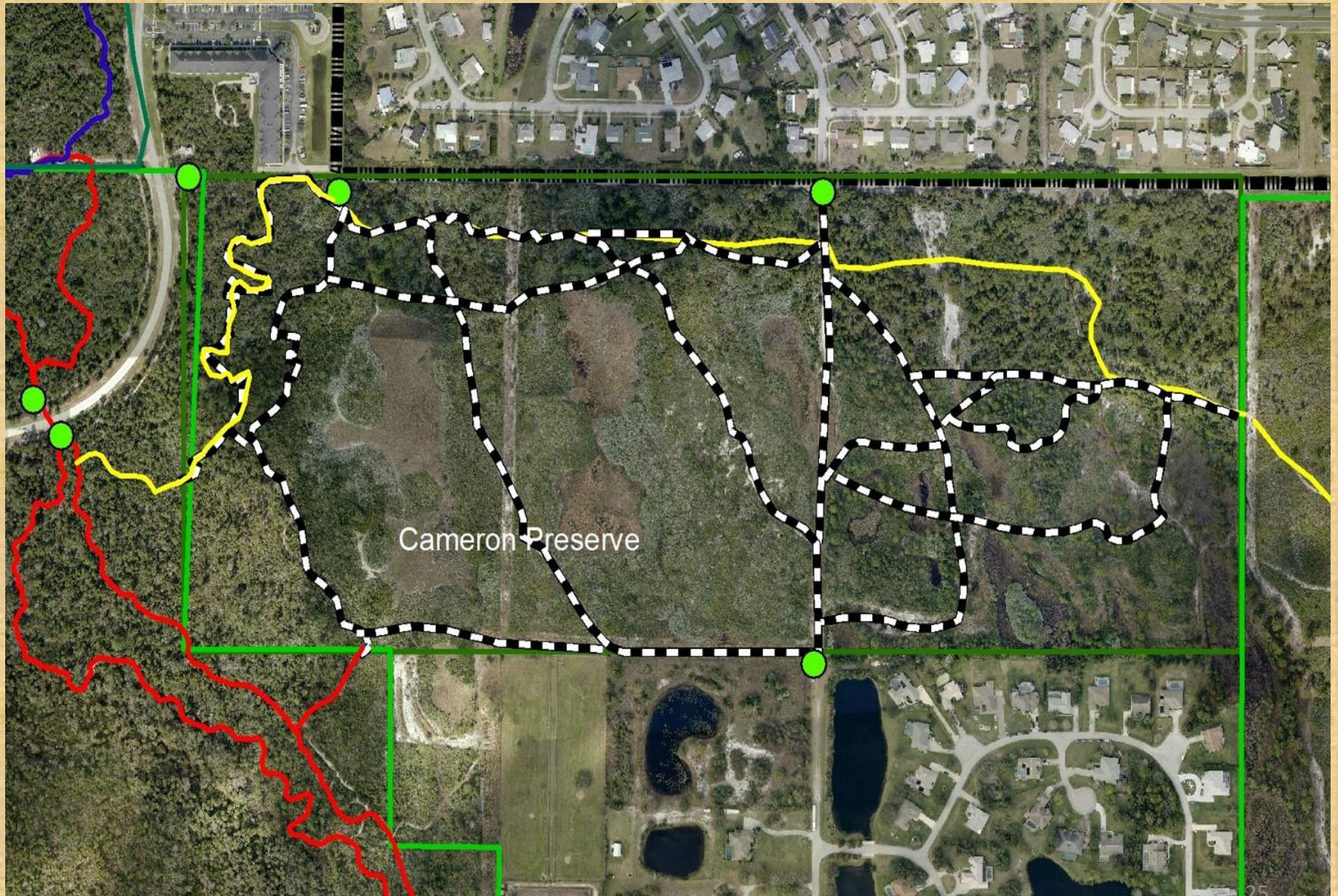
Cameron & Volunteers Preserve Trailhead North End of Corey Rd. (Looking North)



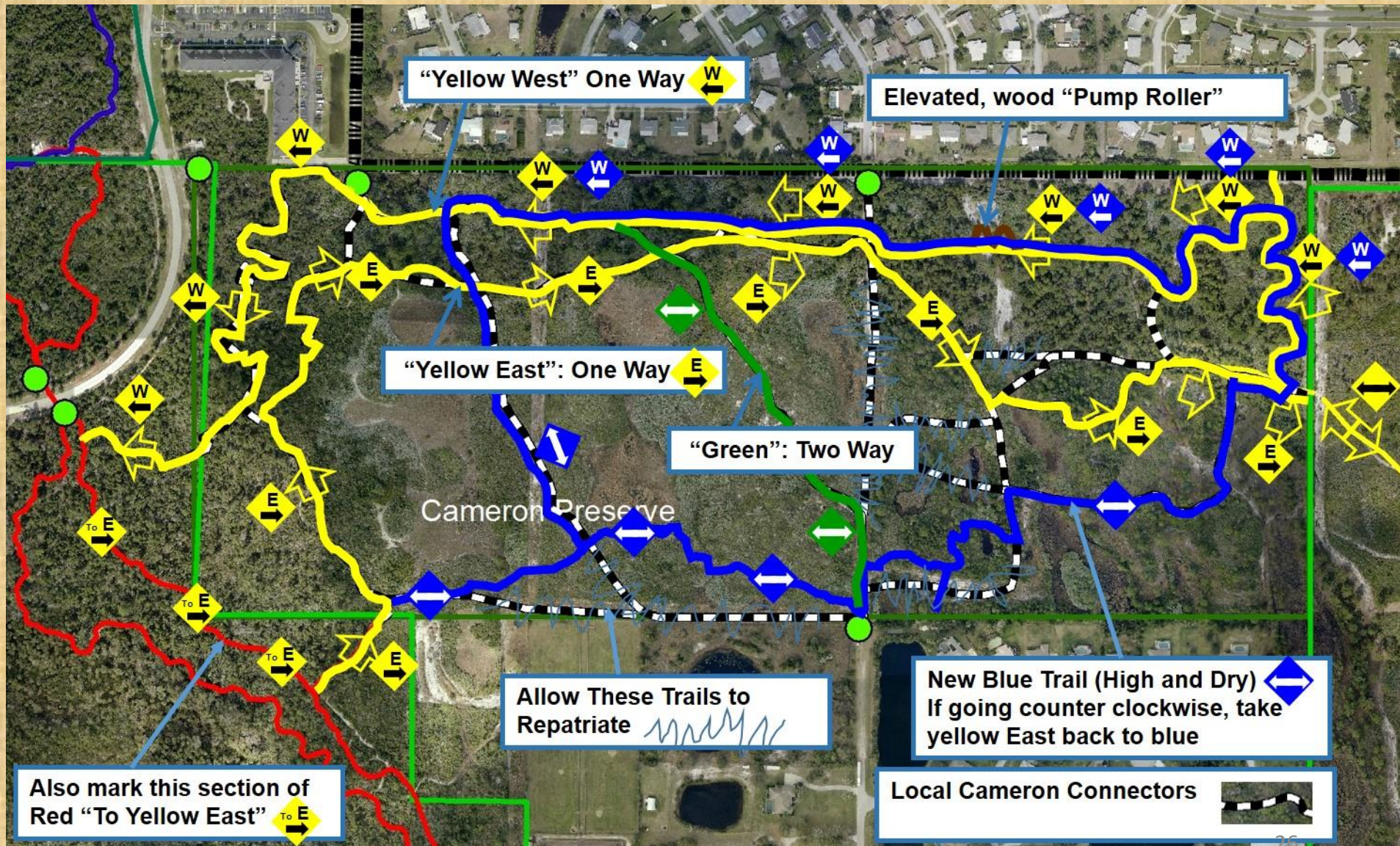
Cameron & Volunteers Preserve Trailhead North End of Corey Rd. (Looking South)



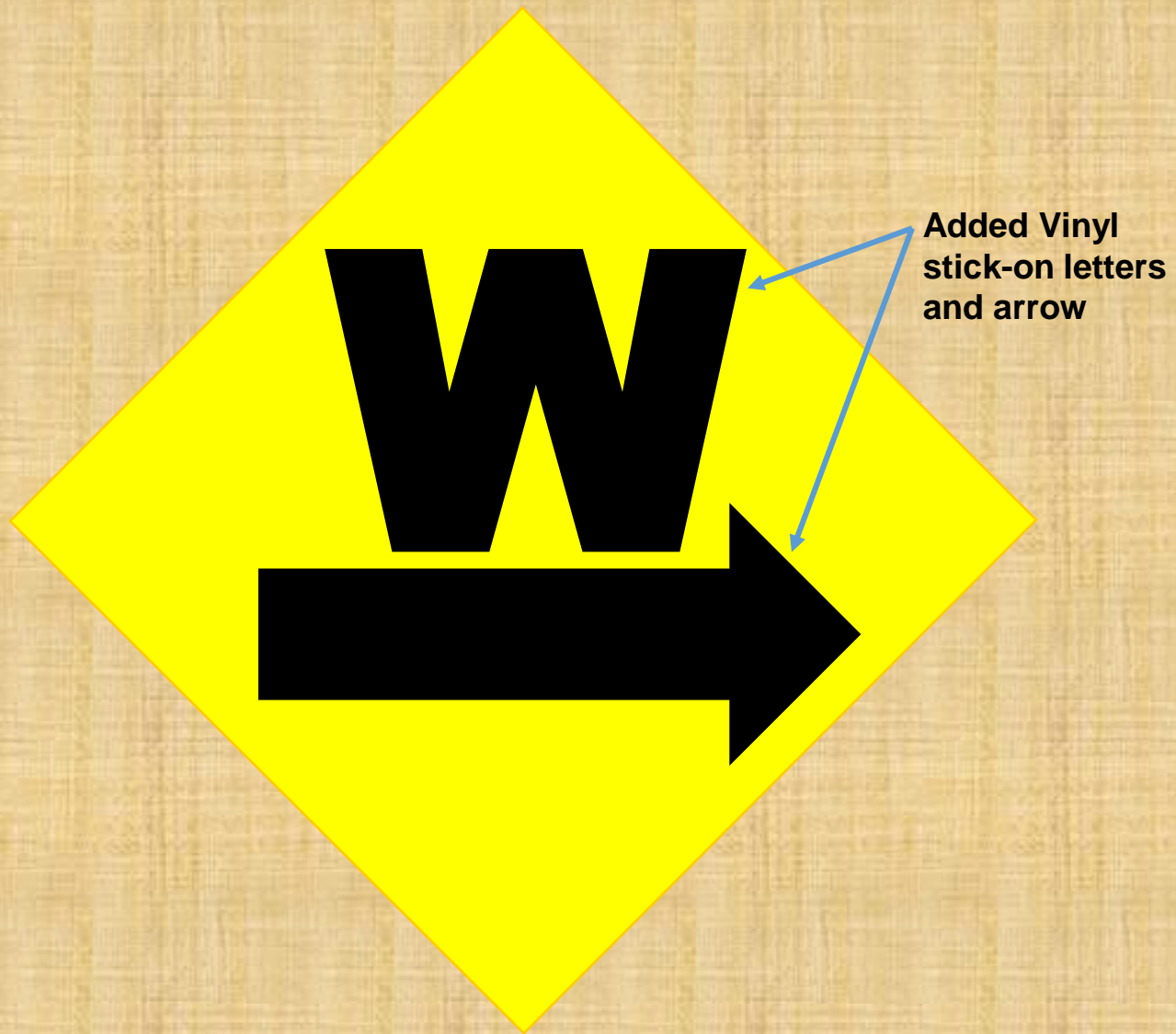
Cameron Preserve's Continuity of Trails



Directional Trail Marking – Cameron Preserve



Anticipated Signage



RJTS? recycled jute-based trail stabilizer



Trails for All Ages



QR Codes on Kiosks – Links to Maps at: www.MalabarTrails.org



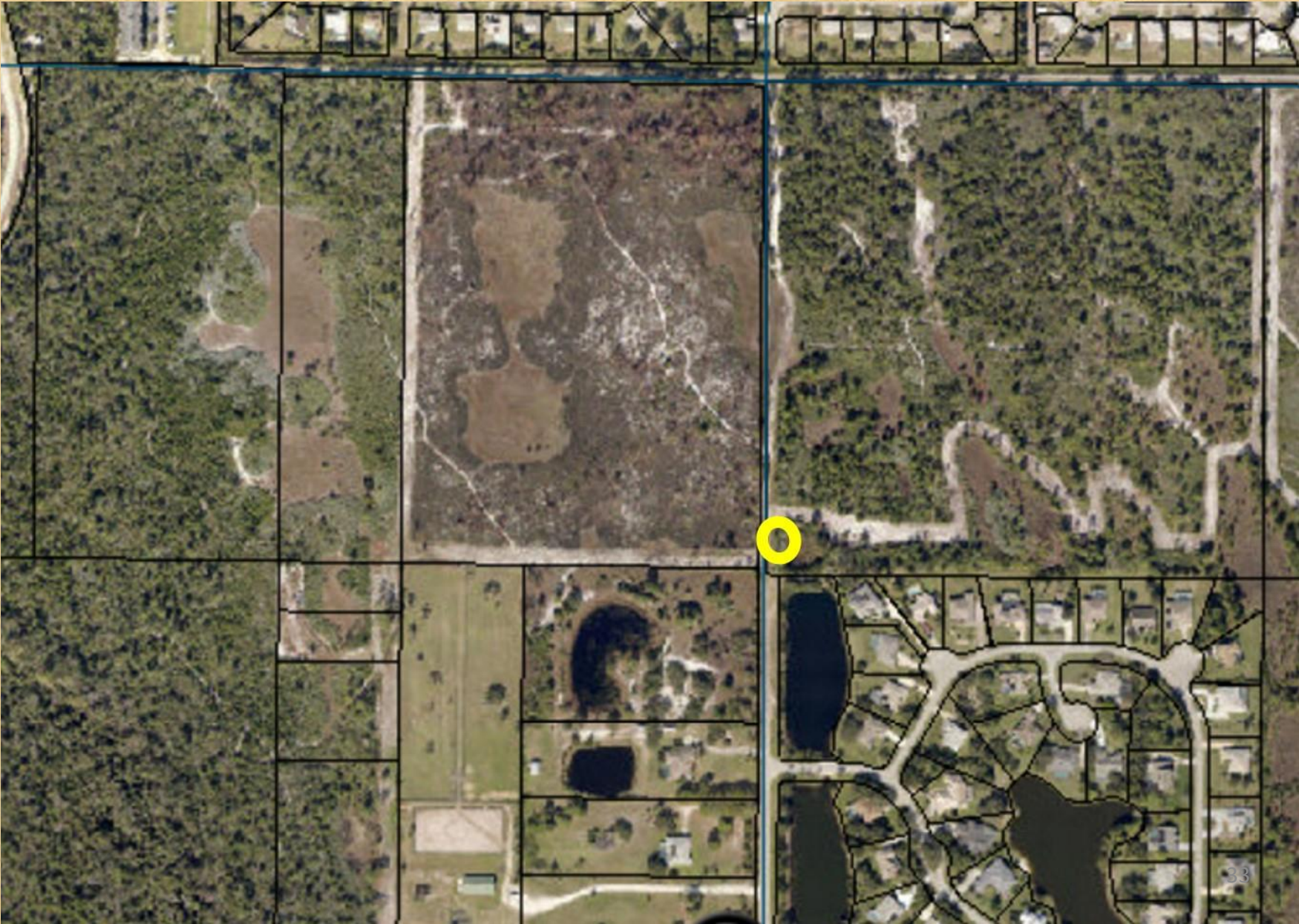
Cameron Preserve – Planned Trail Mod 1



Trail Segment Adjustments Planned Modification 1



Cameron Preserve – Planned Trail Mod 2



FL DEP OGT Grant Award 2014

ADA Restroom & Parking at Sand Hill Trailhead

Main goals of Grant are shown in this picture

- Add ADA accessible restroom directly adjacent to Al Tuttle Trail (FDOT # 4154961)
- Add potable water supply for trail users (small RO type water treatment system, water fountain, public use certified)
- Water lines from existing well
- Septic system for restroom
- Pavement to connect restroom to Trail (ADA compliant)



Sand Hill Trailhead ADA Restroom Project Underway



Sand Hill Trailhead – Al Tuttle Entering Trailhead



Sand Hill Trailhead – Leaving Trailhead on Al Tuttle



**Sand Hill Trailhead – Horse paddock entrance.
Built by Malabar trail volunteers**



Sand Hill Trailhead – Happy Horses



This is the best equestrian Trail Head in Brevard County – and access miles of natural and paved trails

Trail Segment Adjustments Requested for Authorization – Mod 2



Space Coast Pathways Project



What is the Pathways Project?

A project to develop an interactive Guide to Brevard's trails, waterways, sidewalks, bike lanes and unique outdoor adventures funded by the Space Coast Transportation Planning Organization.

Partner Workshop

Date: October 15, 2015

Time: 8:30 am to Noon

Place: Bill Posey Conference Center at Florida Department of Health
2555 Judge Fran Jamieson Way
Viera, FL 32940

Who Should Attend:

- Walk/bike/trail advocates
- Tourism organizations
- Schools/colleges
- Health agencies
- Local governments
- Media

Goals:

- What does the community want in an online pathways guide?
- Where are the current pathways?
- How can we promote our pathways?

**We need
your input!**



RSVP to: Katrina Morrell
Multimodal Communications Specialist
321-690-6890
katrina.morrell@brevardcounty.us
<http://spacecoasttpo.com/walk-bicycle/>

Look for Cameron Preserve Article in TPO Brochure of Brevard Trails – February 2016



2725 Judge Fran Jamieson Way, Bldg. B
Viera, Florida 32940
Telephone: (321) 690-6890
Fax: (321) 690-6827
www.spacecoasttpo.com

Request for Pathways Proposals Posted October 15, 2015

Space Coast TPO Pathways Project Kick Off February, 2016 Introduction

The Pathways Project is the development of an Interactive Guide to Brevard's trails, waterways, sidewalks, bike lanes and unique outdoor adventures.

This application solicits proposals to identify pathways and related events for public participation in February 2016. The goal of the Pathways Project Kick Off is to showcase the diversity of outdoor activities available to residents and visitor's in all geographic areas of the Space Coast. Selected pathways will also be included in the Interactive Guide. Proposals may include self-guided pathways, guided pathways, or pathway events. Proposed pathway projects may be free, not-for-profit, or for profit.

In summary, please identify a pathway in your community that could be highlighted during the month of February and included in the Interactive Guide later in the year. Please use the application below to complete your pathway proposal.

DUE BY TUESDAY, DECEMBER 1, 2015, 3:00 PM

SUBMIT ELECTRONICALLY TO:

TPO Pathways Project – Cameron Preserve

Pathways Outline - Town Of Malabar T&GC Submission_20151201.Docx Last Updated: 12/1/2015 3:34 PM

A. Introduction:

Malabar invites visitors to enjoy our Cameron Preserve. Natural trails of the 100 acres are clearly marked for hikers, mountain bikers, and equestrians, and include sunny and shaded, deep Florida wooded trails. Kiosks are strategically located with smartphone QR codes linked to maps & information.

The full name of the Cameron Preserve is actually the **Richard E. Cameron, Sr. & Volunteers Wilderness Preserve**. Richard rounded up many locals who also loved the local wilderness areas and launched an effort of preservation, trail and trailhead improvements that now continues through Malabar's T&GC. We are always working to make the trail system of Malabar more enjoyable and sustainable. For more information about volunteering with the T&GC, please contact Cindi Kelly, Deputy Town Clerk, Town of Malabar, at: ckelley@townofmalabar.org or (321) 727-7764 x11.

B. The Basics:

The trails of Cameron Preserve were designed for hikers, mountain bikers and equestrian users. There is a variety of topography to see, including wooded areas and open Florida scrub. Elevation changes are minor, although the trail segments do pass by some interesting wetland areas. A part of the south Brevard County greenway, contiguous areas of forest and scrub, the Cameron Preserve offers much in biodiversity of plant and animal life. The Cameron Preserve is in the shape of a rectangle, with its southern border crossing the north end of Corey Road, in Malabar. It is mostly bordered on the north along the boundary canal by the Al Tuttle Trail, a paved trail that runs from Port Malabar Blvd., in Palm Bay, to the Sand Hill Trailhead, at 1400 Marie Street, in Malabar. If Corey Road went through the Cameron Preserve, two thirds of the preserve would be to the west and one third to the east. The Cameron Preserve is maintained by Town of Malabar, connects to and lies between two EEL Program (Environmentally Endangered Lands Program) maintained properties to the east and west: the Malabar Scrub Sanctuary East & Malabar Scrub Sanctuary West. Additionally, the northwestern corner of the Cameron Preserve is separated from trails of the Turkey Creek Sanctuary only by Briar Creek Boulevard – at the point where City of Palm Bay and Town of Malabar meet. Accordingly, the Cameron Preserve provides an idea of trail conditions of these neighboring trail systems without some of the challenge factor and/or distances associated with those areas. The Trails and Greenways Committee of Town of Malabar works closely with the EEL Program Managers so that the connections of trails through these different protected lands are well marked and flow nicely.

Pathways Outline - Town Of Malabar T&GC Submission_20151201.Docx Last Updated: 12/1/2015 3:34 PM

C. Added Bonus:

To optimize safety, signage of the (main) yellow trail was recently adjusted to recognize the new single track approach. Yellow trail markers are now designated with arrows that indicate the recommended direction of travel for hikers and mountain bikers. The northern east-west segments of the trail have arrows and the letter "W" to have hikers and mountain bikers travel west. The southern east-west segments of the trail have arrows and the letter "E" to have hikers and mountain bikers travel east. Equestrian users are asked to travel in the opposite direction so that any trail encounters between horses and people are face to face. We have found that horses are much less likely to be startled when they sense that a person is approaching from in front of them. Surprising a horse from behind could be dangerous for all.

An additional bonus of the trails in the Cameron Preserve is especially nice for new mountain bikers. Rather than abandon old "sugar sand" trail sections originally cut by ATVs, where only the toughest mountain bikers could push on through, Malabar's Trails and Greenways Committee (T&GC) has implemented **recycled jute-based trail stabilizer (RJTS)**. This local trail-proven trick involved staking down inverted carpet to stabilize such sections. Without these stabilization efforts, the deep sand would continue to cause trail users to oscillate back and forth, motivating them to seek more solid riding/walking locations and thus distorting the trail width. Native grass seed has been added along the stabilization areas to expedite revegetation and the sections are quickly experiencing new plant life along the trail. Stabilizing the sugar sand areas with **RJTS** has proven to be a way to recycle and it also has provided an economical way to the restore missing trail segments that now complete the single track Yellow Trail.

One more bonus is that, following your trek through the Cameron Preserve, you can replenish all those calories that you just burned by stopping by Malabar Mo's, Malabar's local bar and grill, located just west of US Hwy 1 at the east end of Malabar Road. Whether done by foot, pedal, or stirrup, if you mention to your server that you just "Cruised the Cameron" your party is sure to get just the right appetizer to help fix that calorie deficit.

D. Challenge Factor:

Easy to moderate. While the elevation varies little, various trail surfaces are encountered. Conditions vary from dry to wet, from shaded to open, from smooth sand to numerous roots crossing the trail. Kiosks at key points along the trail will help you to identify where you are, what you will see, and conditions to expect. The area is part of a large coastal greenway system and therefore home to wildlife you may not be accustomed to seeing. Be aware that diamond back rattlesnakes call the area home, are occasionally encountered, and therefore have the right of way on

TPO Pathways Project – Cameron Preserve - continued

Pathways Outline - Town Of Malabar T&GC Submission_20151201.DOCX Last Updated: 12/1/2015 3:34 PM

the trails. Signage is strong with some shortcuts to other trails and neighboring preserve areas clearly marked. Cameron is a great place to start exploring local trails and a great place to return to if your trail time is limited and you just want to feel far from a city.

E. Getting There

Officially located at 1100 Corey Road, Malabar, FL 32950, it is super easy to find the Cameron Preserve. Just head to south Brevard County and find Malabar Road. If you are traveling from I-95, take to exit 173. From Malabar Road at I-95, head east for 2.7 miles and then turn left on Corey Road. If traveling south from Palm Bay or North from Barefoot Bay, from Malabar Road at US Hwy 1, head east for 1.7 miles and then turn right on Corey Road. Go north on Corey Road for about 0.7 miles, the pavement ceases and you are at the trailhead at the North end of Corey Road, Malabar, FL. You will see a fence, a sign, and a kiosk. Your Cameron Preserve adventure is about to begin.

F. Know Before You Go

Users are encouraged to orient themselves to the large map at the kiosk located at the trailhead. Since cell tower strength is very weak at some locations along the trail it is recommended that, prior to venturing deep into the preserve, smartphone users download local segment maps via kiosk QR codes. The trail offers no restrooms, potable water, or horse paddocks. The nearest public restroom (without potable water & without horse paddocks) is at Malabar Community Park, located to the east of Corey Road, at 1840 Malabar Rd., Malabar, FL 32950. The nearest public restroom (with potable water and with horse paddocks) is at the Sand Hill Trailhead, located to the east of Corey Road, at 1400 Marie Street, Malabar, FL 32950 (go about 1 mile east on Malabar Rd. then turn left onto Marie Street, trailhead is less than a block off Malabar Rd.).

G. Added Details

As with all trail exploration, it is recommended that you let someone NOT venturing with you know of your planned route, time of departure, and anticipated time of return. Check the latest local weather forecast before you head out. Even in the winter, dress appropriately for weather extremes and bring along plenty of water. Apply sunscreen before you head out and bring along some bug spray, too. Plan your adventure route so that you return prior to nightfall. Bringing a camera and binoculars are rarely a regret.

Pathways Outline - Town Of Malabar T&GC Submission_20151201.DOCX Last Updated: 12/1/2015 3:34 PM

4.2 PHOTOGRAPH(S): Please provide at least one color photograph in JPEG format that can be published and used for event publicity.



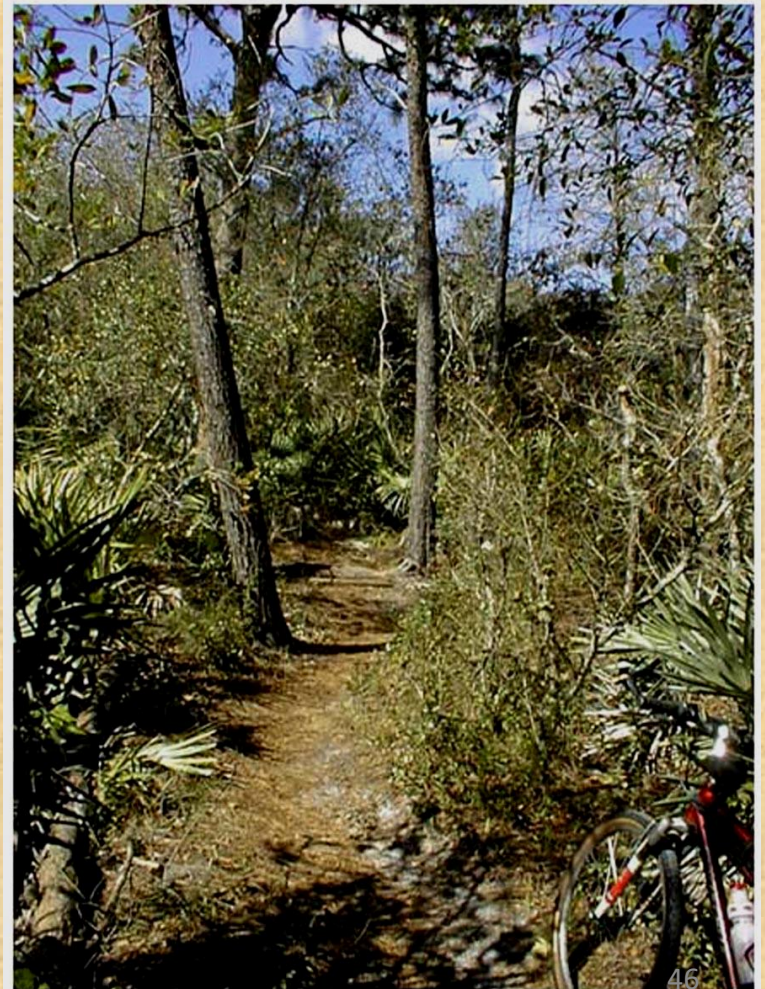
A Cameron Preserve trail after RUTS material installation by T&GC

Turkey Creek & Brook Hollow Area Trails in Malabar Scrub Sanctuary East



Canoe launching

Narrow Uplands Trail



Looking South at Marie St. & Malabar Rd. Down the Coastal Ridge Linear Trail



Jordon Scrub (EEL Pgm) South of Malabar Rd.



**Possible Lagoon Trailhead – “Triangle Property”
North of Rocky Pt. Rd. – Being Researched by TG&C**



TRAILS AND GREENWAYS COMMITTEE (T&GC) UNOFFICIAL MISSION



**THANK
YOU**

**See you on
the trail!**