

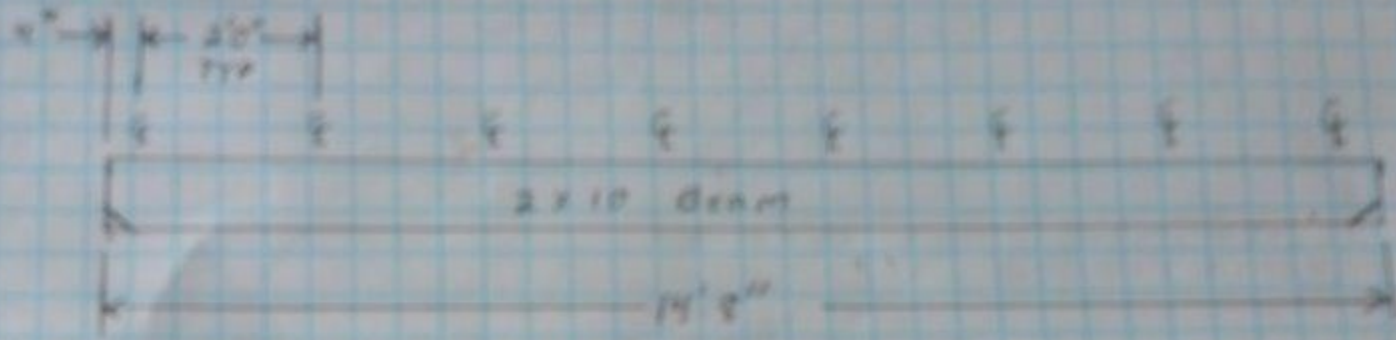




APPLY TAPE SERVICE
A Full Service
Tape Application Service
204
83-833

WOOD TREATMENT
Kiln Dried
Pressure Treated
Lumber
204
83-833

Yellow box with text, likely a product label or warning sign.



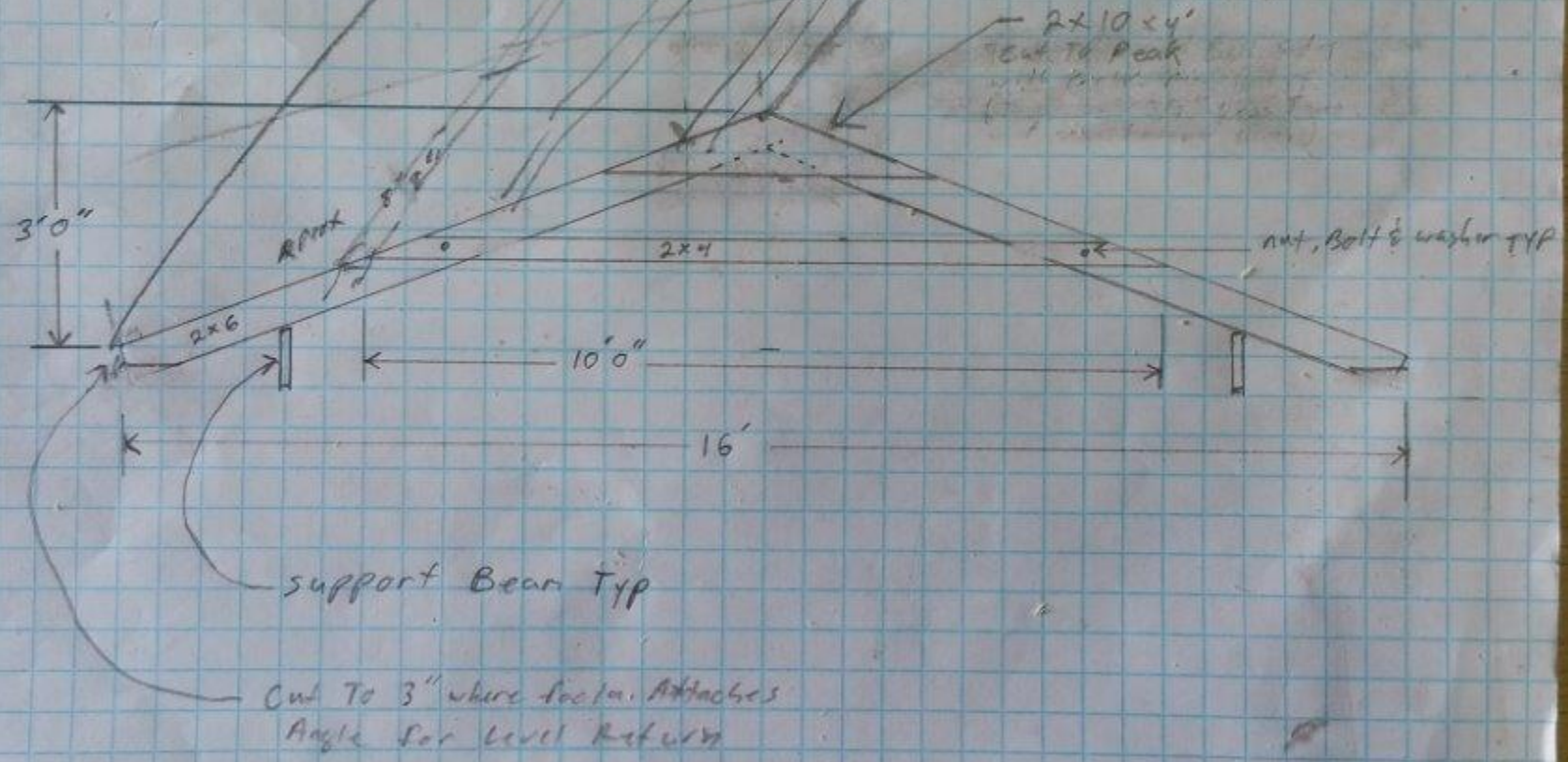
mark stringer

- 10 stringers to be 15' 8"
- 16 end support blocks for 9 stringers
3" x 6" x 12"

9 bolts for beams

we have
 8 - 2x4x10
 21 - 2x6x12
 2 - 2x6x16
 2 - 2x10x12
 2 - 2x10x16

Material for 8 Truss
 need:
 16 - 2x6x10 Truss
 (have) 8 - 2x4x10 Truss
 10 - 2x4x16 strings
 4 - 2x6x10 Gable fascia
 have 2 - 2x6x16 overhang fascia
 2 1/2" screws
 2 plywood







Wagner